

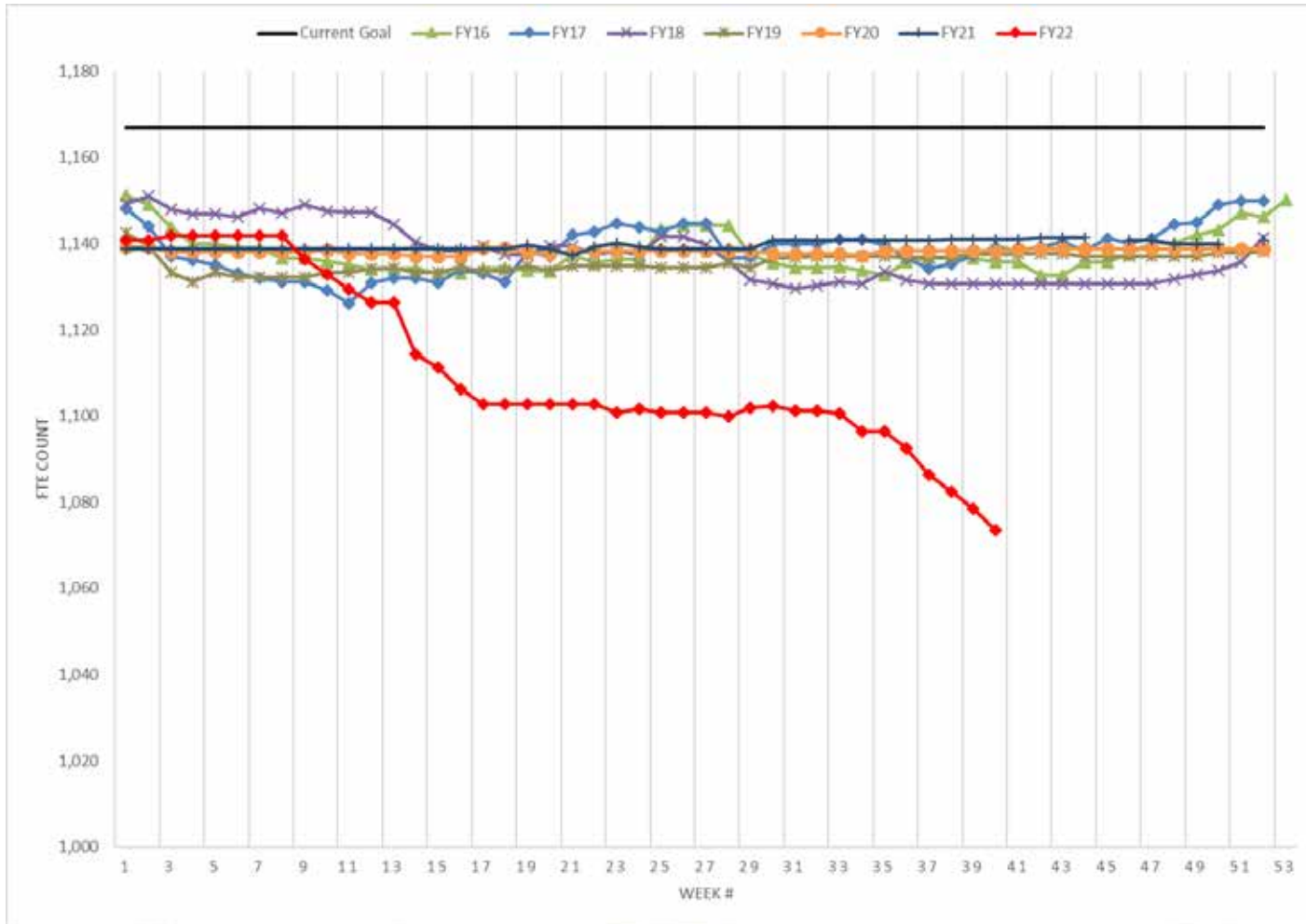


Quabbin Reservoir Spillway





Staffing Levels - FTEs



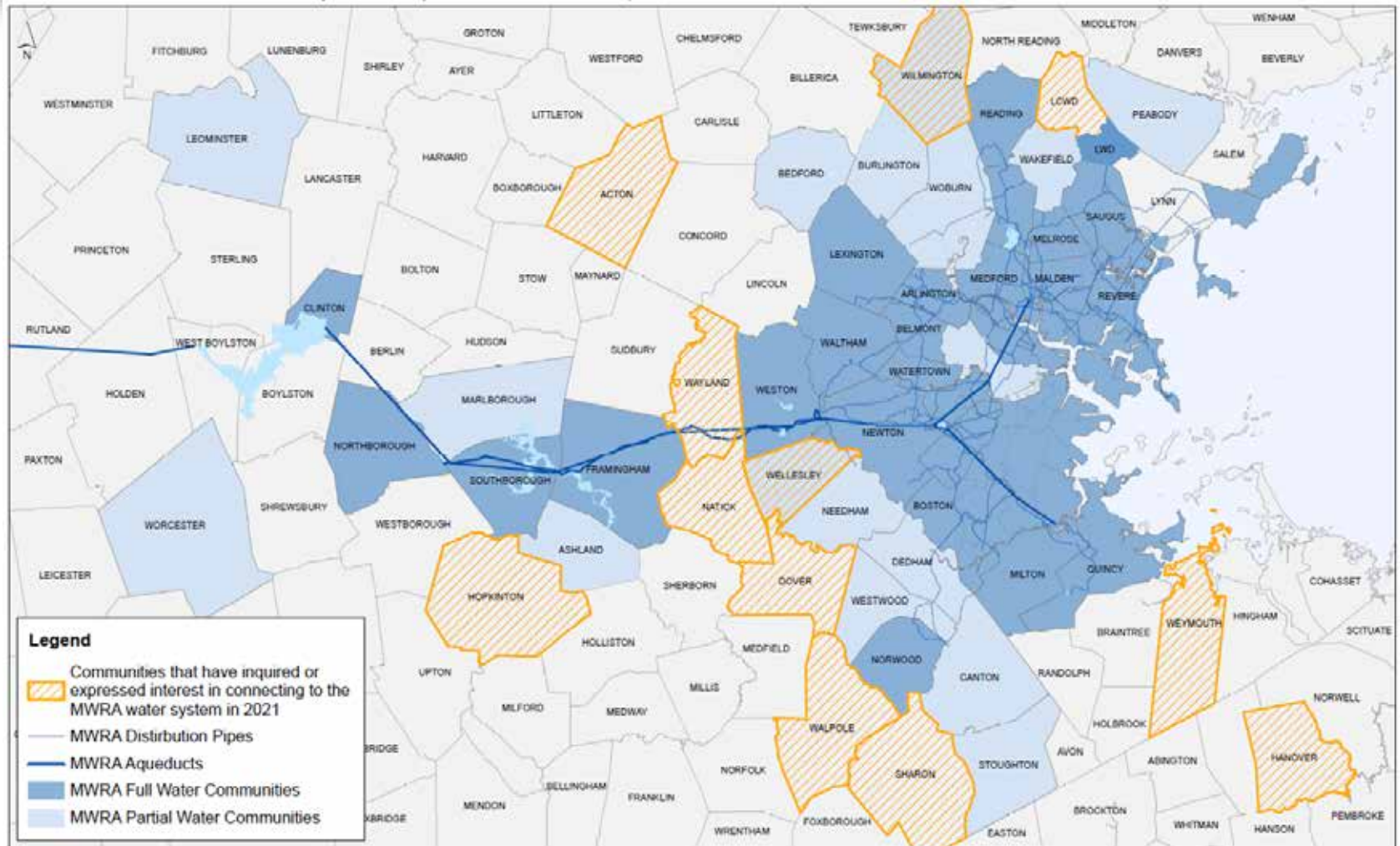


*Annual Update on New Connections
to the MWRA System*

April 13, 2022

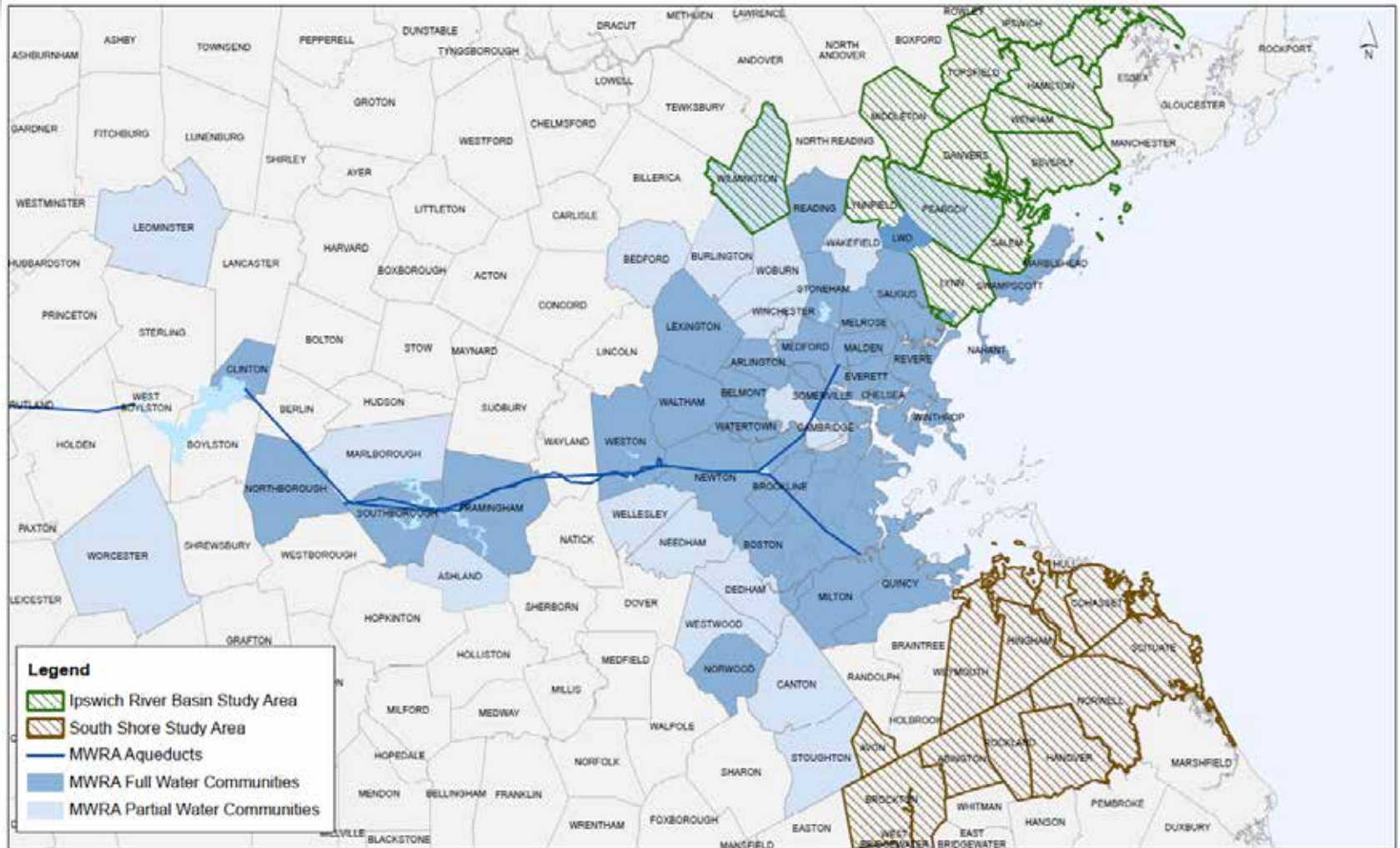


System Expansion: 2021 inquiries and Potential Future Connections





System Expansion Study Areas





*MOA with Chelsea for
Griffin Way/Eastern Avenue Intersection*

April 13, 2022



Griffin Way Traffic Signal





*William A. Brutsch Hydroelectric Facility
and
McLaughlin Fish Hatchery Pipeline*

April 13, 2022



Brutsch Hydroelectric Facility and McLaughlin Fish Hatchery Pipeline Project

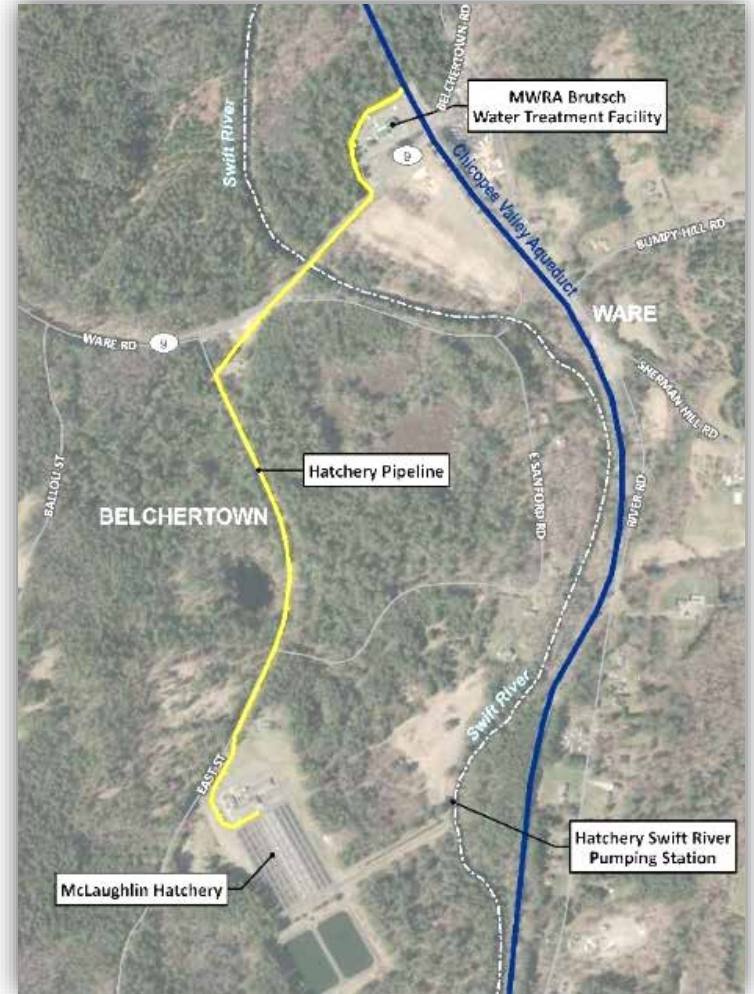
- Joint project:
 - MWRA
 - EOEEA
 - Division of Fisheries and Wildlife
 - Department of Fish and Game
 - Leading by Example Program
 - Clean Energy Center
- 2020 Silver Award for Outstanding Professional Design Excellence from the American Council of Engineering Companies of Massachusetts





Brutsch Hydroelectric and Hatchery Pipeline

- Project included
 - 60 kW Hydroelectric Turbine at Brutsch Treatment Facility
 - 4,440 foot pipeline to McLaughlin Fish Hatchery
- Construction Completed in 2017
- Total Cost: \$4,372,254
 - DFW \$2,700,00
 - Grant \$714,235
 - MWRA \$958,019





Numerous Benefits for Hatchery

- Produces on average 250,000 lbs of brook, brown, rainbow and tiger trout per year
- Receives 6 mgd from Quabbin through Chicopee Valley Aqueduct
- Reduces Hatchery's carbon footprint by eliminating electrical demand associated with pumping water from Swift River
- Provides cold, well oxygenated water to the fish hatchery benefiting health and growth of fish





Brutsch Hydroturbine

- Produces approximately 450,000 kWh/year electricity
- Positive return on investment after 8 years based on actual operational data
- Reduces MWRA's carbon footprint by generating renewable hydroelectric power



[Home](#) > [EEA](#) > [Department of Fish and Game](#) > [Division of Fisheries and Wildlife](#)

OFFERED BY [Division of Fisheries and Wildlife](#)

NEWS

Water flowing at McLaughlin Fish Hatchery

A new water pipeline and hydropower turbine at the McLaughlin Fish Hatchery will reduce the hatchery's electricity costs.

1/02/2017

Division of Fisheries and Wildlife



BELCHERTOWN — On December 22, 2016, officials turned on the water pipeline at the McLaughlin Fish Hatchery in Belchertown. Construction began in June 2016 on the nearly mile-long water pipeline and hydropower turbine that will supply six million gallons of water daily to the hatchery, produce renewable energy, and reduce the hatchery's electric demand.