



Spot Pond Covered Storage and Pump Station





Artist Rendering







Presentation to

MWRA Board of Directors

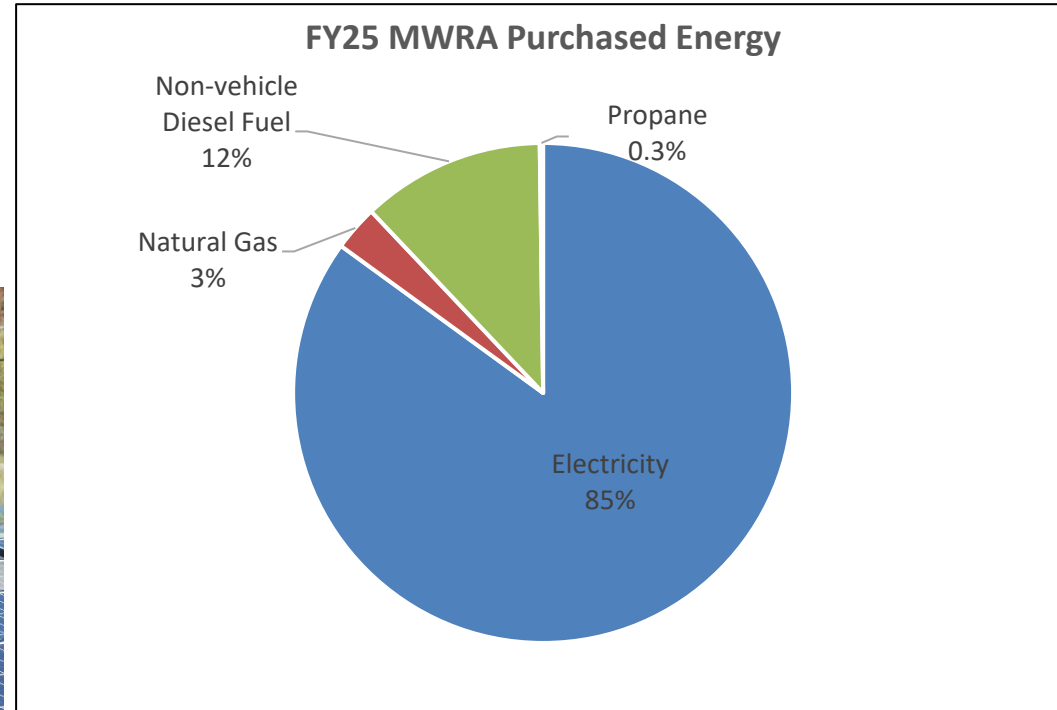
Electricity Procurement Strategies

April 15, 2026



Energy Expenses

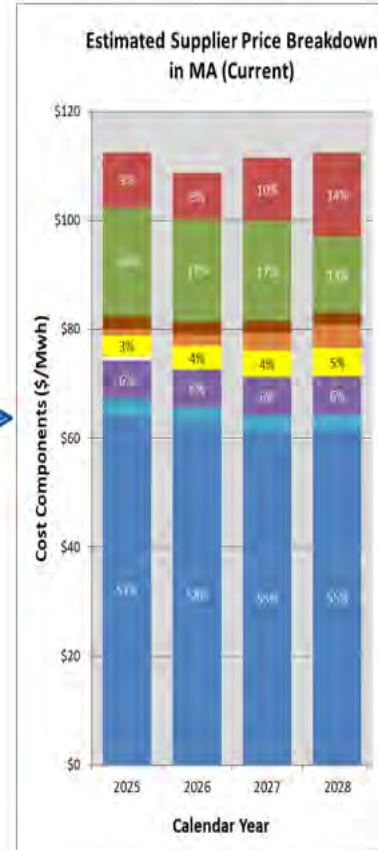
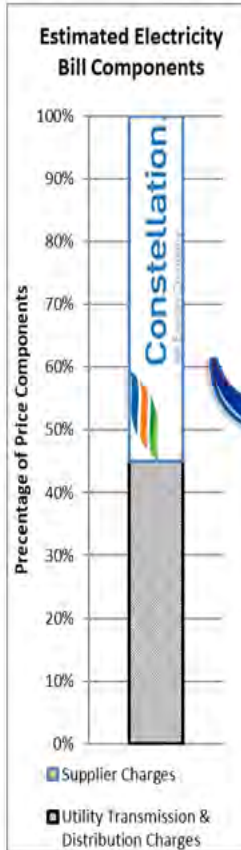
- Utility and fuel spending accounts for 11% of direct operating expenses
- Over \$32 million per year





Electricity Cost Components

- **Supply** - actual electricity used
 - Investor-owned Electricity Company
 - Licensed Competitive Supplier
- **Delivery** (distribution/transmission) - transporting electricity and maintaining lines and substations
 - Investor-owned Electricity Company
 - Municipal Light Plants



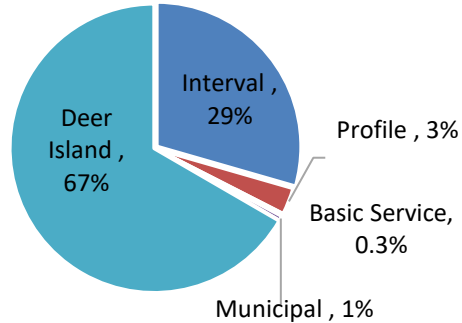
- Capacity
- Renewable Portfolio Standards (RPS)
- Clean Energy Standard (CES)
- Clean Energy Standard - Expansion
- Clean Peak Standard
- Cost of Service/Fuel Security Ch. 1
- Inventoried Energy Program/Fuel Security Ch. 2
- Ancillaries
- Line Losses
- Energy

* Source: Proprietary Data, Eversource

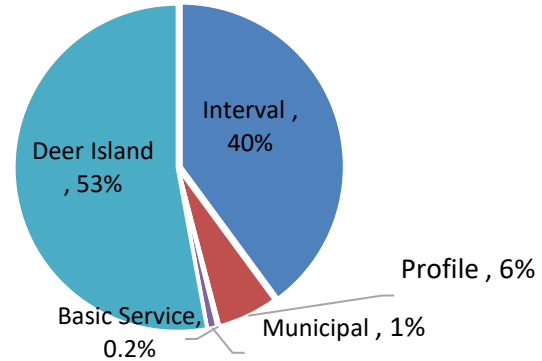


MWRA Electricity Contracts Overview

% Total MWRA Load (156M kWh/yr)



% Total MWRA Budget (\$24M)



Competitive Electricity Supply Contracts

- Interval Accounts (ends June 2028) - All Fixed Energy Contract Price with Capacity pass-through
- Deer Island Account (ends Oct 31, 2027) - Fixed Block (10MW/3MW) w/Ancillary pass-through
- Profile Accounts (ends Nov 2027) - All Fixed Energy Contract Price (through PowerOptions program)





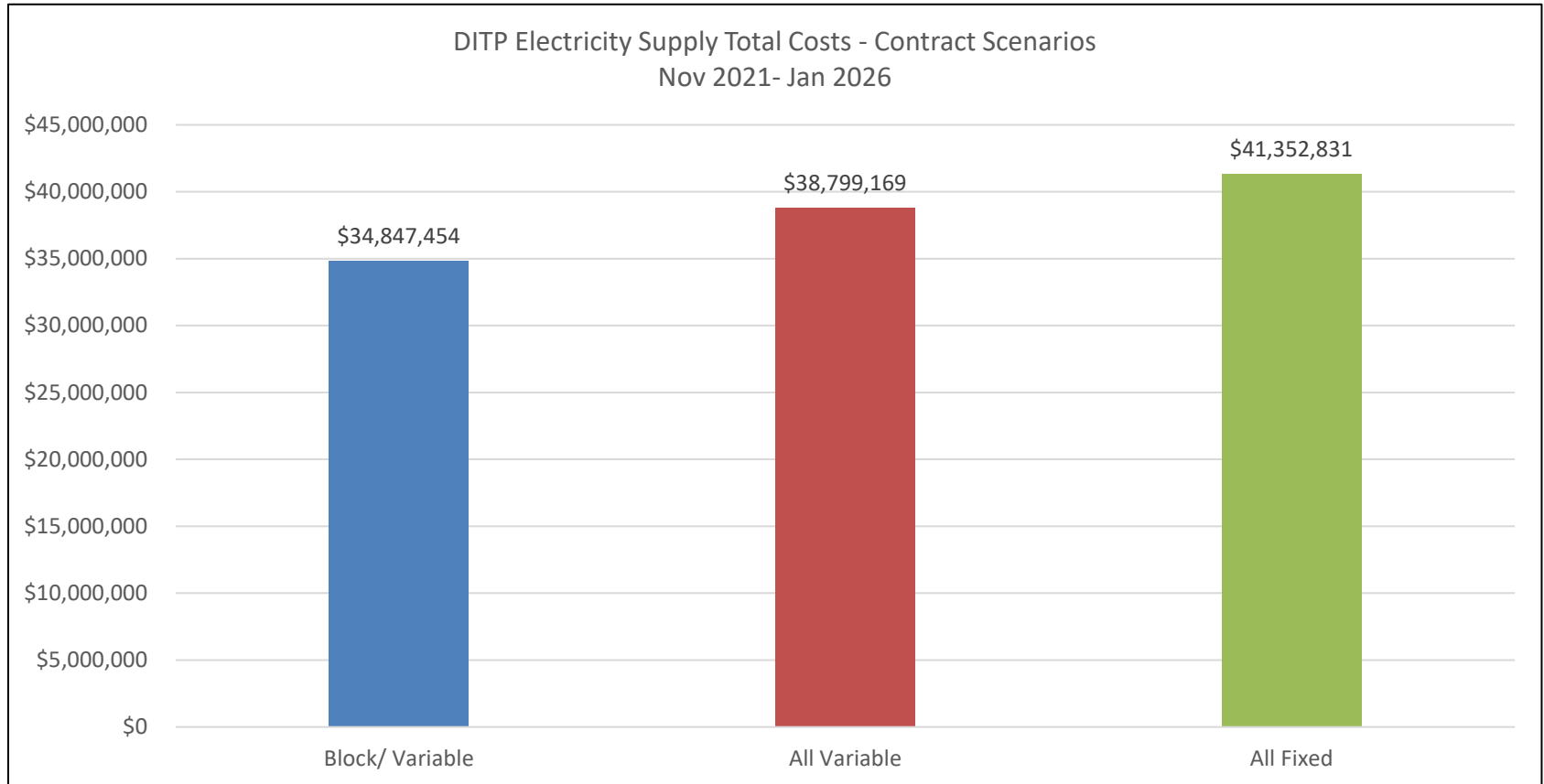
Electricity Contract Structures

- **Fixed rates (Profile Accounts and Interval Accounts)**
 - Set price for specified contract period
 - Prioritizes budget control - predictable and guaranteed
 - Protection from market increases, but no ability to take advantage of market lows
 - Advantageous during market spikes and loads with limited load control
 - May include premium for price certainty
- **Index rates (occasionally various MWRA Accounts)**
 - Choose energy timing or volume in real time
 - Utilize temporarily until market is stable enough to lock in fixed rate
 - Can benefit organizations who can adjust energy usage to align with dips in pricing
 - Comes with higher risk exposure and less budget certainty
- **Blended rates (Deer Island Account and previously Interval Accounts)**
 - Hybrid of Fixed and Index
 - Can hedge percentage of energy
 - “Block” price(s) is fixed for the contract term
 - Energy used the block billed at index market rate
 - Balance of budget certainty and ongoing opportunity to capture lower real-time market pricing





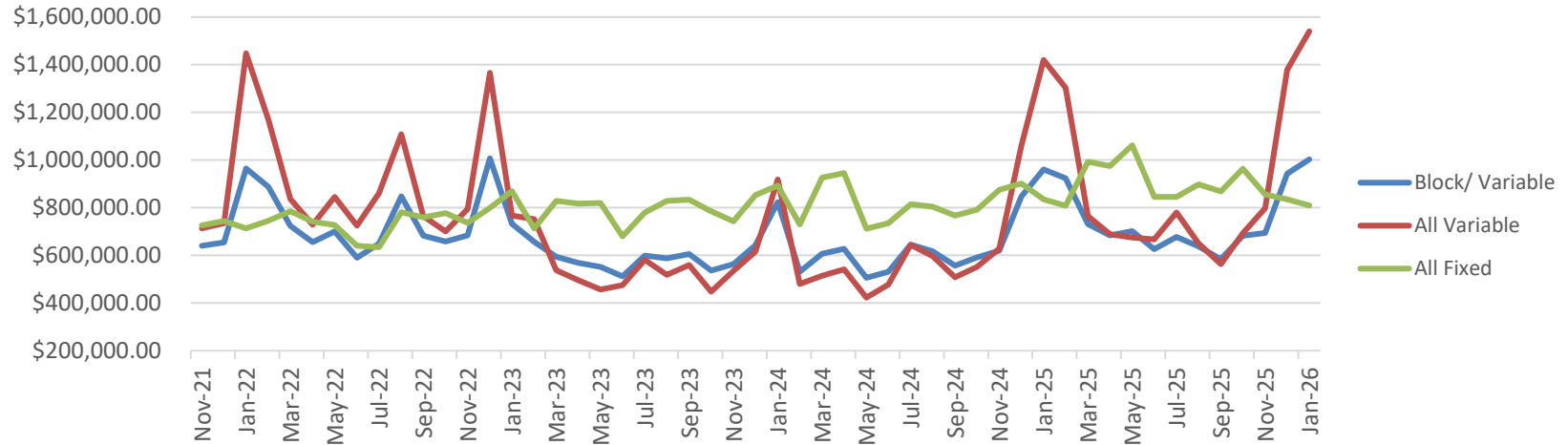
Electricity Supply Total Cost Contract Scenario Comparison





Electricity Supply Cost Over Time Contract Scenario Comparison

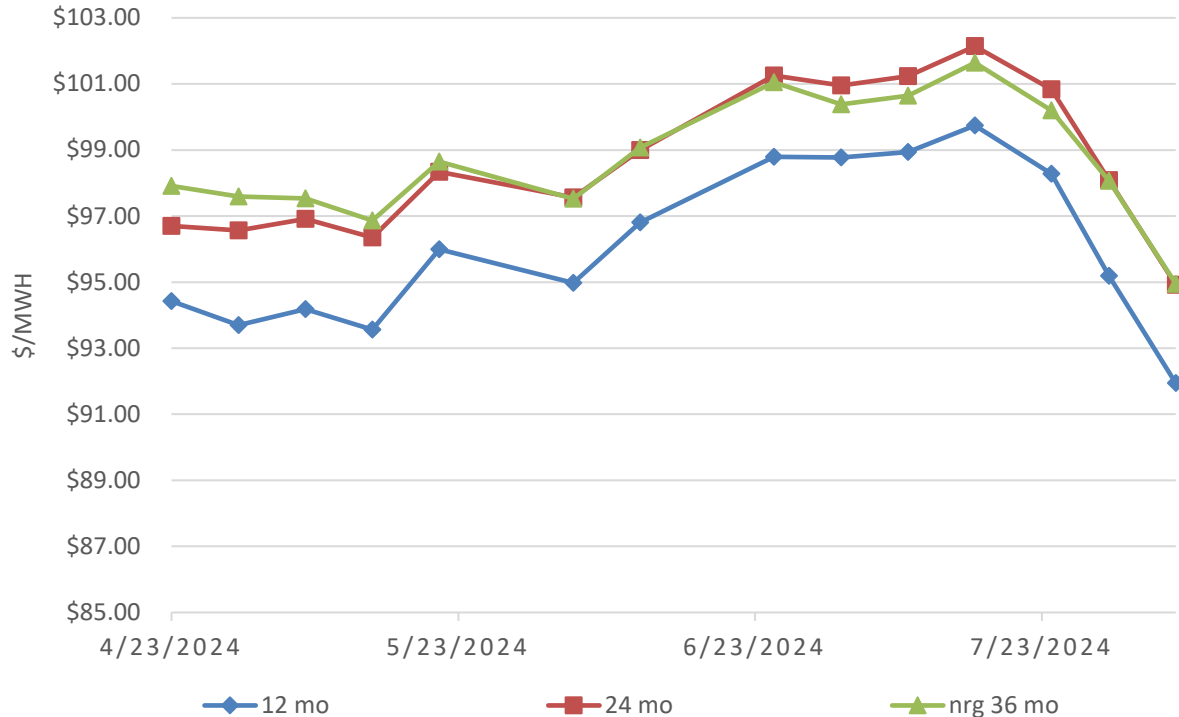
DITP Electricity Supply Total Costs - Contract Scenarios





Market Monitoring with Indicative Pricing

DITP ELECTRICITY BLOCK + INDEX INDICATIVE PRICING





Additional Electricity Supply Considerations

Utility Procurements

- Procure electricity every six months for residential and small business customers
 - To manage price volatility and align with seasonal demand changes, as mandated by the DPU

Collaborative Purchasing Options

- Commonwealth of MA Operational Services Div
- PowerOptions, Inc.
- Community Choice Aggregation (CCA)
 - Municipalities can aggregate electricity demand for residents and businesses and procure energy supply at competitive market prices
 - Aggregations can purchase for longer periods than utility
 - Large industrial users often opt for specialized, custom, or direct-supplier contracts, as MWRA uses for its facilities
 - For MWRA smaller accounts on utility basic service supply, ~ 50% of those accounts are enrolled in CCA programs through municipalities that offer such option





Questions?





Presentation to

MWRA Board of Directors

***Infiltration/Inflow Local Financial Assistance Program
Annual Update***

April 15, 2026



MWRA I/I Local Financial Assistance Program

Program initiated in May 1993

Goal: Rehabilitation of local sewer systems and long-term reduction of I/I

Infiltration/Inflow (I/I)



Infiltration

(Groundwater via physical defects)

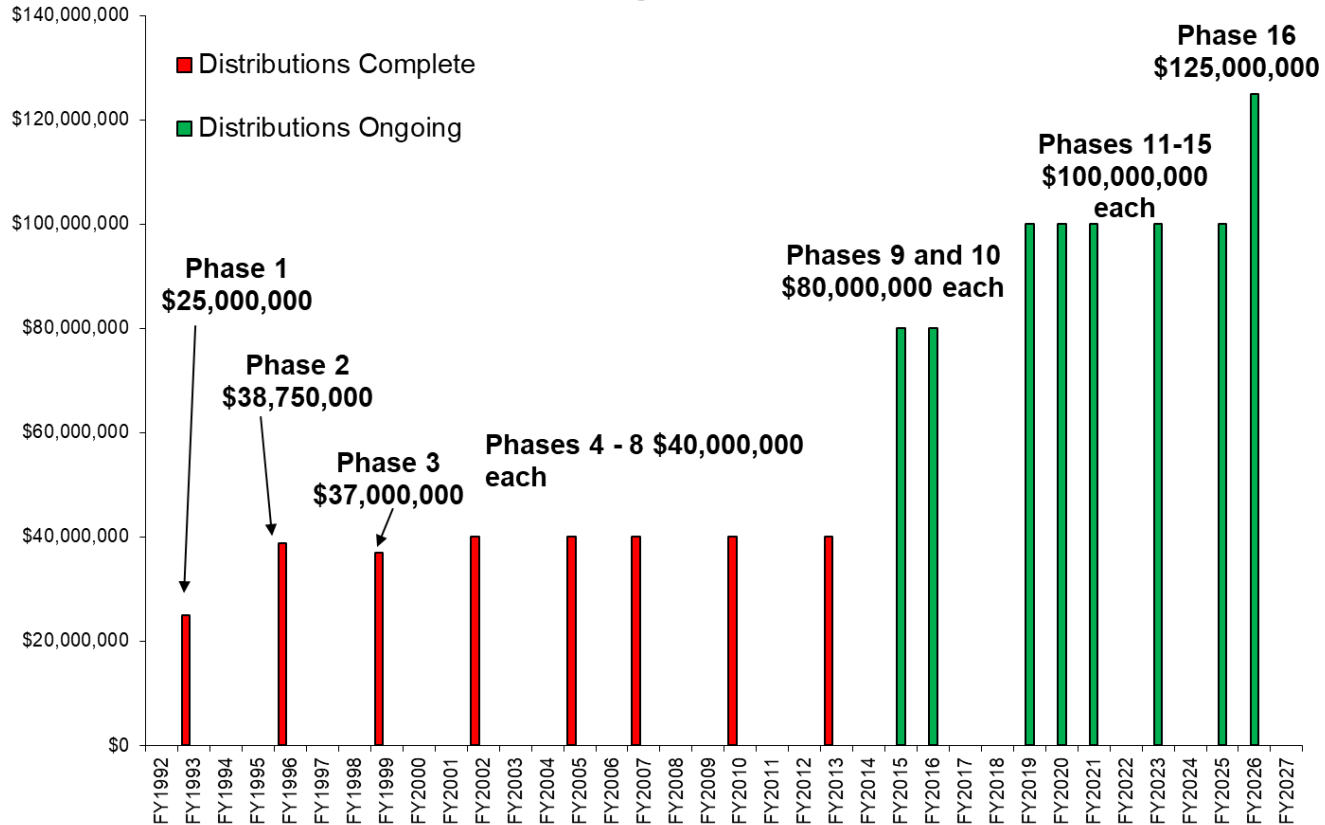
Inflow

(Stormwater via direct connections)



MWRA's Long-Term Commitment to Fund I/I Reduction

I/I Local Financial Assistance Program
Timing of Phases





MWRA I/I Local Financial Assistance Program Funding Summary

MWRA I/I LOCAL FINANCIAL ASSISTANCE PROGRAM COMMUNITY FUNDING SUMMARY THROUGH DECEMBER 2025

Community	Total Allocations (Phases 1 - 16)	Total Distributions (Phases 1 - 16)	Percent Distributed	Funds Remaining
† Arlington	\$19,408,000	\$13,713,000	71%	\$5,695,000
† Ashland	\$5,579,500	\$4,311,860	77%	\$1,267,640
Bedford	\$7,955,600	\$3,109,158	39%	\$4,846,442
Belmont	\$11,690,100	\$5,135,100	44%	\$6,555,000
Boston	\$309,135,200	\$131,029,337	42%	\$178,105,863
Braintree	\$20,901,000	\$13,290,357	64%	\$7,610,643
† Brookline	\$29,698,200	\$21,275,200	72%	\$8,423,000
†† Burlington	\$12,215,800	\$9,954,800	81%	\$2,261,000
Cambridge	\$57,507,100	\$28,830,100	50%	\$28,677,000
Canton	\$9,701,900	\$5,522,460	57%	\$4,179,440
*† Chelsea	\$17,586,100	\$13,510,100	77%	\$4,076,000
† Dedham	\$13,051,000	\$9,240,000	71%	\$3,811,000
Everett	\$19,511,500	\$11,611,500	60%	\$7,900,000
Framingham	\$29,111,000	\$13,671,000	47%	\$15,440,000
† Hingham	\$4,105,500	\$2,812,500	69%	\$1,293,000
Holbrook	\$4,016,600	\$1,349,600	34%	\$2,667,000
† Lexington	\$17,476,300	\$12,155,300	70%	\$5,321,000
Malden	\$29,486,900	\$9,802,870	33%	\$19,684,030
Medford	\$27,868,600	\$7,961,600	29%	\$19,907,000
† Melrose	\$14,357,300	\$10,106,300	70%	\$4,251,000
*† Milton	\$12,904,500	\$10,164,500	79%	\$2,740,000
Natick	\$13,248,600	\$6,832,600	52%	\$6,416,000
Needham	\$14,302,600	\$4,018,600	28%	\$10,284,000
*† Newton	\$49,302,400	\$43,680,400	89%	\$5,622,000
Norwood	\$17,124,400	\$8,449,400	49%	\$8,675,000
Quincy	\$46,608,000	\$32,325,000	69%	\$14,283,000
Randolph	\$14,423,800	\$4,971,058	34%	\$9,452,742
† Reading	\$10,964,100	\$7,749,100	71%	\$3,215,000
Revere	\$24,325,900	\$6,802,900	28%	\$17,523,000
Somerville	\$36,621,800	\$18,995,800	52%	\$17,626,000
*† Stoneham	\$11,422,900	\$8,919,900	78%	\$2,503,000
*†† Stoughton	\$11,353,900	\$10,284,900	91%	\$1,069,000
† Wakefield	\$13,953,900	\$9,836,900	70%	\$4,117,000
Walpole	\$8,876,000	\$5,473,210	62%	\$3,402,790
Waltham	\$31,278,400	\$19,214,560	61%	\$12,063,840
† Watertown	\$14,457,800	\$10,185,800	70%	\$4,272,000
Wellesley	\$13,282,700	\$6,889,700	52%	\$6,393,000
Westwood	\$6,268,300	\$3,091,300	49%	\$3,177,000
Weymouth	\$27,667,900	\$16,560,900	60%	\$11,107,000
Wilmington	\$6,184,000	\$2,462,000	40%	\$3,722,000
*† Winchester	\$9,822,000	\$7,673,000	78%	\$2,149,000
Winthrop	\$7,963,400	\$5,083,400	64%	\$2,880,000
*† Woburn	\$23,029,500	\$18,505,500	80%	\$4,524,000
Totals	\$1,085,750,000	\$596,562,570	55%	\$489,187,430

- \$1.086 Billion approved (16 Phases)
- Community allocations based on percent share sewer charge
- All 43 communities participating
- \$596M distributed
- 708 local projects funded
- 616 projects complete / 92 projects ongoing
- \$30.3M distributed to 19 communities in CY25

* Phase 13 used † Phase 14 used †† Phase 16 used



I/I Funding Results of Local Projects

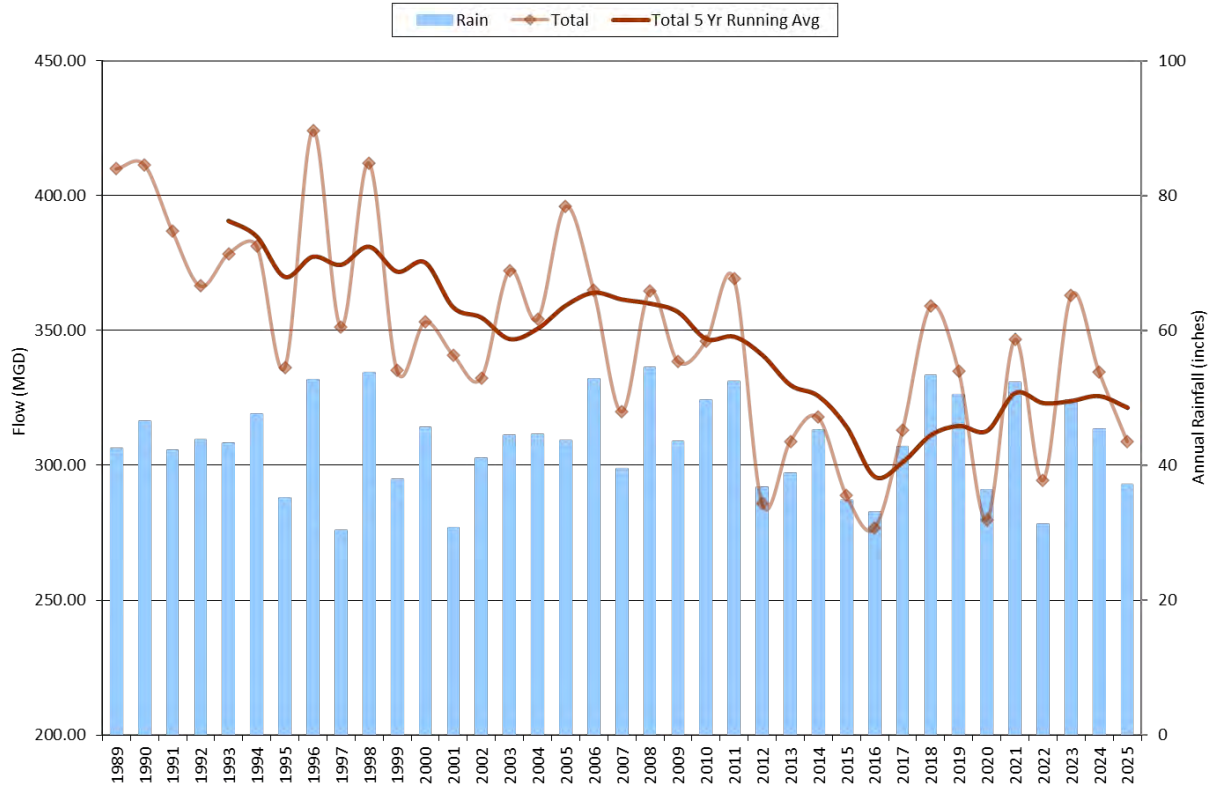
- CCTV Inspection of Sewers: 2,716 Miles
- CIPP Liner Installed: 388 Miles
- Sewer Spot Repairs Performed: 3,431
- Manholes Inspected: 74,849
- Manholes Rehabilitated/Sealed: 25,447
- Manhole Covers Replaced: 4,159
- Sump Pumps Redirected: 551
- Downspouts/Area Drains Disconnected: 5,389





MWRA Long-Term Regional Flow Data – Gradual Decrease in Flow

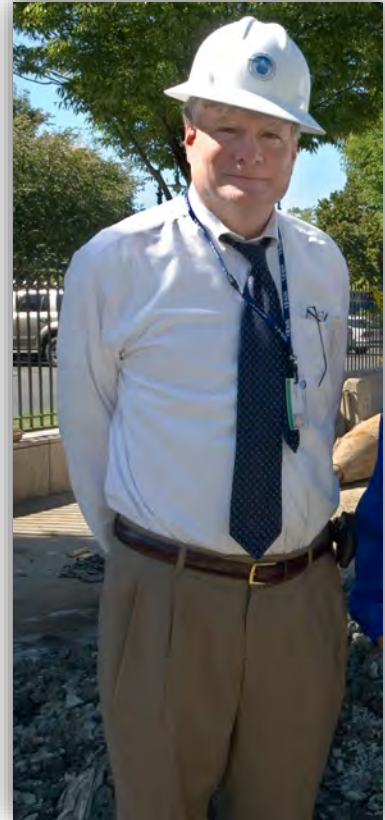
MWRA Long-Term Regional Flow Data
NOAA Annual Rainfall at Logan Airport





Accomplishments under Fred's Leadership

- Phases 4 through 16 of Program Approved
- All 43 Sewer Communities are Participating
- \$557M Distributed
- 540 Local Projects Funded
- Flows to Deer Island are Down





Presentation to

MWRA Board of Directors

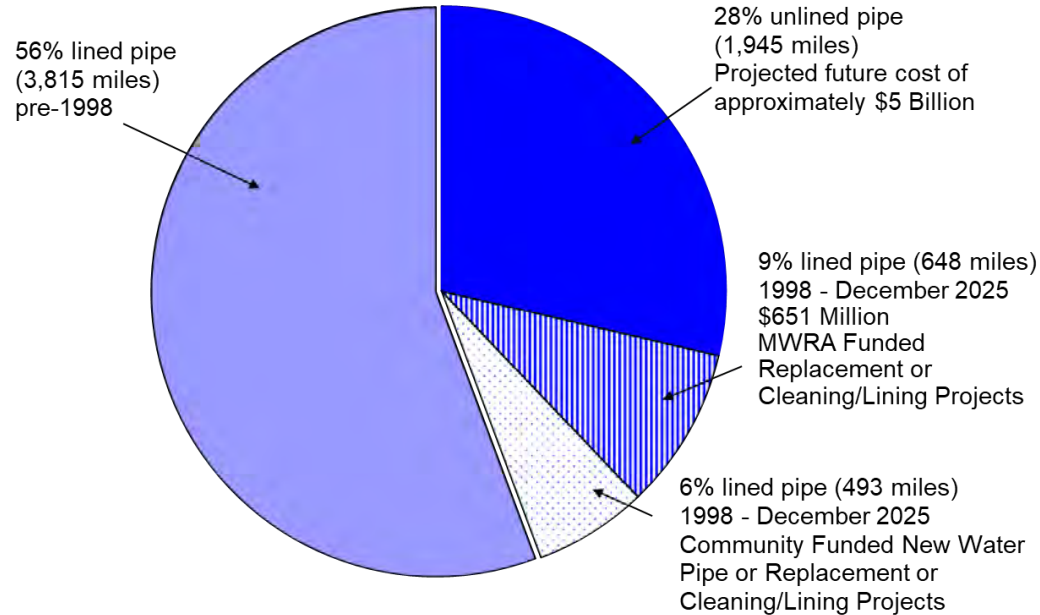
***Local Water System Assistance Program
Annual Update***

April 15, 2026



MWRA Has Funded a Nine Percent Reduction in Unlined Cast Iron Mains

**Regional Water System Lined and Unlined Pipe
6,901 Miles of Community Water Mains
Updated through December 2025**





MWRA Local Water System Assistance Program Funding Summary

ALLOCATION AND FUND UTILIZATION AS OF DECEMBER 2025

Community	Total Allocation Phases 3 + 4	Total Funds Distributed Phases 3 + 4	Percent Distributed	Total Remaining Funds
Arlington	\$17,248,000	\$5,875,000	34%	\$11,373,000
Ashland*	\$1,370,400	\$0	0%	\$1,370,400
Bedford *	\$6,886,000	\$0	0%	\$6,886,000
Belmont	\$6,985,000	\$4,652,000	67%	\$2,333,000
Boston	\$102,426,000	\$47,781,059	47%	\$54,644,941
Brookline	\$9,076,000	\$1,234,000	14%	\$7,842,000
Burlington*	\$1,954,400	\$0	0%	\$1,954,400
Carlton *	\$5,608,000	\$2,500,000	45%	\$3,108,000
Chelsea	\$10,198,000	\$2,511,700	25%	\$7,686,300
Dedham/Westwood *	\$1,948,000	\$849,000	44%	\$1,099,000
Everett	\$11,515,000	\$3,319,200	29%	\$8,195,800
Framingham	\$18,864,000	\$2,700,900	14%	\$16,163,100
Lexington	\$18,691,000	\$1,891,015	10%	\$16,799,985
Lynnfield Center WD. *¶	\$764,400	\$0	0%	\$764,400
Lynnfield WD	\$3,289,000	\$2,330,800	71%	\$958,200
Malden	\$20,575,000	\$9,481,000	46%	\$11,094,000
Marblehead	\$9,824,000	\$2,022,400	21%	\$7,801,600
Marlborough	\$12,007,000	\$0	0%	\$12,007,000
Medford	\$20,940,000	\$7,538,000	36%	\$13,402,000
Melrose	\$13,402,000	\$6,075,900	45%	\$7,326,100
Milton	\$11,568,000	\$3,440,800	30%	\$8,127,200
Nahant	\$3,803,000	\$745,550	20%	\$3,057,450
Needham *	\$3,991,000	\$337,265	8%	\$3,653,735
Newton	\$40,410,000	\$6,251,100	15%	\$34,158,900
Northborough	\$3,468,000	\$0	0%	\$3,468,000
Norwood	\$11,022,000	\$5,666,400	51%	\$5,355,600
Peabody *	\$6,523,000	\$2,756,000	42%	\$3,767,000
Quincy**	\$25,817,000	\$12,826,800	50%	\$12,990,200
Reading	\$9,364,000	\$3,043,800	33%	\$6,320,200
Revere	\$10,309,000	\$2,126,000	21%	\$8,183,000
Saugus	\$18,710,000	\$4,402,414	24%	\$14,307,586
Somerville	\$21,064,000	\$11,766,500	56%	\$9,297,500
Southborough	\$3,639,000	\$0	0%	\$3,639,000
Stoneham	\$5,262,000	\$2,500,000	48%	\$2,762,000
Stoughton*	\$4,411,000	\$3,122,000	71%	\$1,289,000
Swampscott	\$10,291,000	\$2,894,468	28%	\$7,396,532
Wakefield *	\$6,213,000	\$4,356,000	70%	\$1,857,000
Waltham	\$29,768,000	\$1,462,561	5%	\$28,305,439
Watertown	\$12,325,000	\$3,683,000	30%	\$8,642,000
Wellesley *	\$7,554,000	\$0	0%	\$7,554,000
Weston	\$4,434,000	\$2,643,497	60%	\$1,790,503
Wilmington *	\$2,649,000	\$0	0%	\$2,649,000
Winchester *	\$2,810,000	\$0	0%	\$2,810,000
Winthrop*	\$7,697,000	\$4,119,000	54%	\$3,578,000
Woburn *	\$8,391,000	\$4,490,000	54%	\$3,901,000
SUBTOTAL	\$565,111,200	\$183,395,129	32%	\$381,716,071

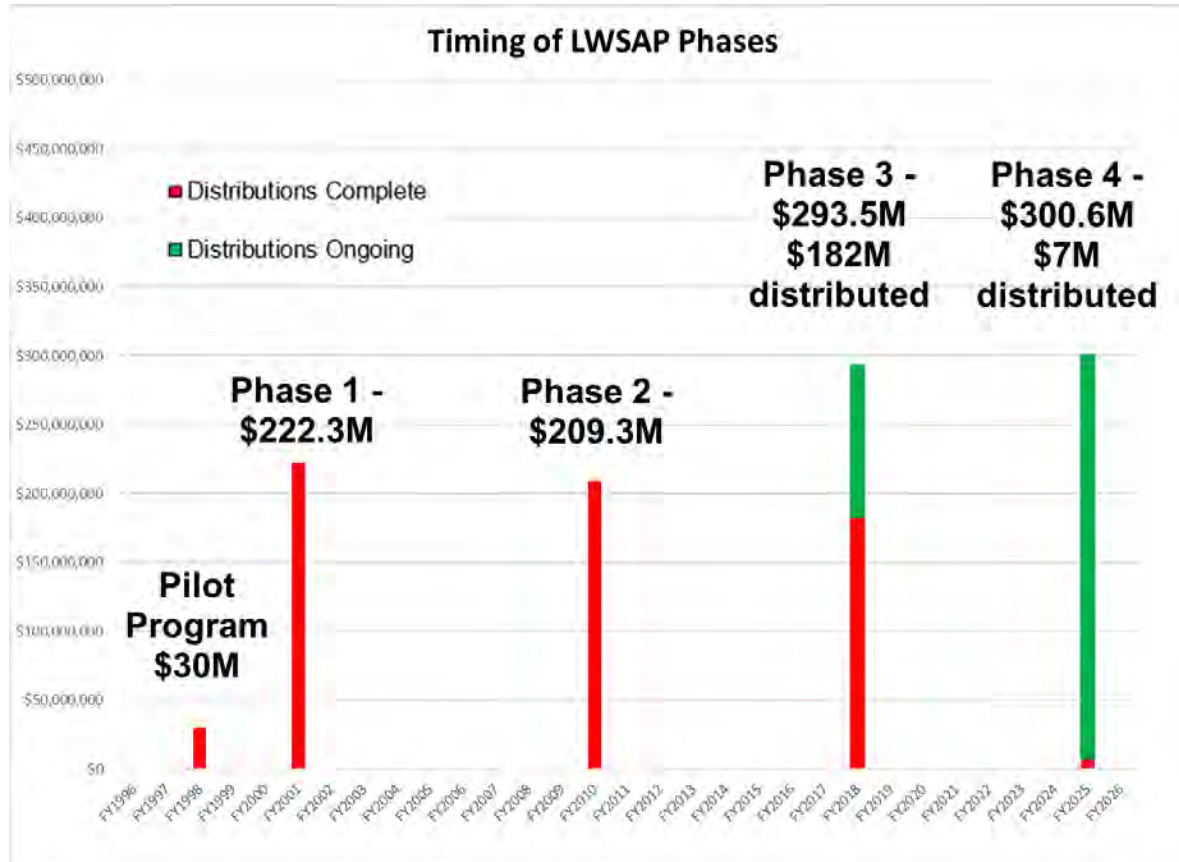
Chicopee	\$20,187,000	\$5,186,400	26%	\$15,000,600
South Hadley F.D. 1	\$4,246,000	\$500,000	12%	\$3,746,000
Wilbraham	\$4,567,000	\$691,000	15%	\$3,876,000
SUBTOTAL	\$29,000,000	\$6,377,400	22%	\$22,622,600

TOTAL	\$594,111,200	\$189,772,529	32%	\$404,338,671
--------------	----------------------	----------------------	------------	----------------------

- \$1.025 Billion approved in four (4) phases
- \$651M distributed (FY98 - December 2025)
- 45 communities participating
- Community allocation based on % share water charge and % share unlined pipe
- 676 local projects funded
- 596 projects complete / 80 ongoing
- \$30.5M distributed to 19 communities in CY25



MWRA's Long-Term Commitment to Fund Local Water System Rehabilitation





Tuberculated Water Mains





Water Main Replacement





Water Tank Rehabilitation





Accomplishments under Fred's Leadership



- All Phases of the Current Water Program approved
- Revised program guidelines to allow communities to use funds for lead replacements early on
- Got ahead of the problem by establishing the original Lead Loan Program in 2016
- Under the LWSAP since 2001
 - 582 Projects Funded
 - \$625 Million Distributed



Presentation to

MWRA Board of Directors

Lead Service Line Replacement Program Update

April 15, 2026



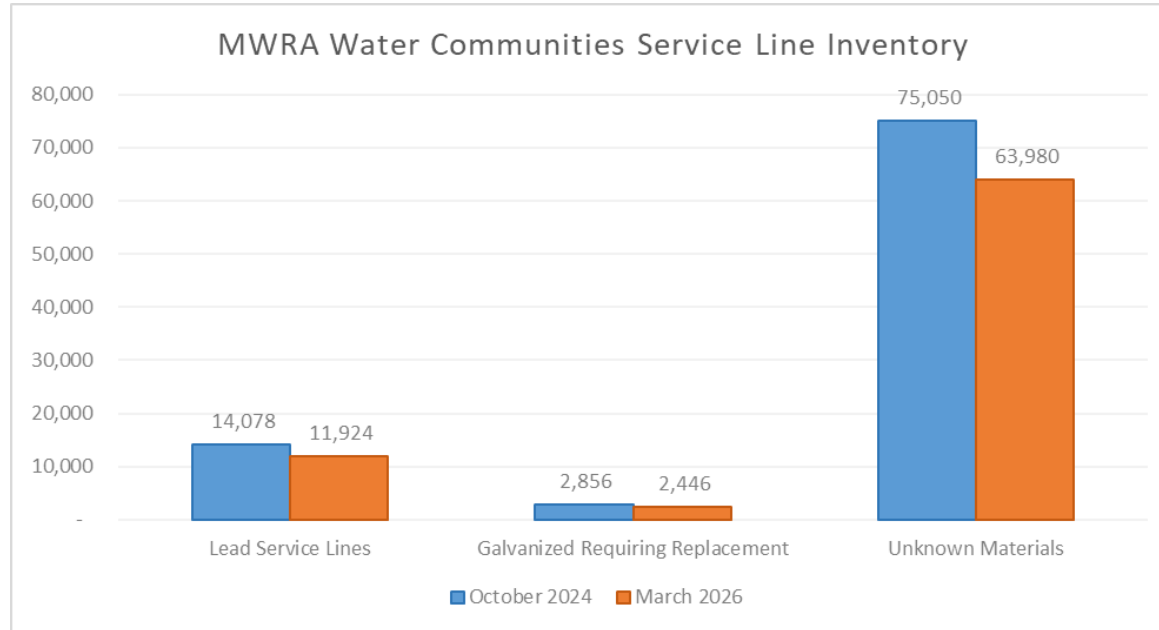
MWRA Lead Replacement Program: Background

- Launched in 2016 - \$100 Million for community projects, 10 year interest-free loans
- Must replace **ALL** lead pipe within a service line - **BOTH** public and private portions
- Eligible projects include Lead Service Line Replacements, Lead Gooseneck Replacements, Addressing Unknowns
- In 2024, \$100 Million was added and a 25% grant was included
- Replacing the private side at no cost to the homeowner is required to receive the 25% grant. Communities that do not fully fund the private side can still apply for a 0% interest loan





Service Lines Initial Inventory (October 2024) vs March 2026



Category	October 2024	March 2026	Difference	% Change
Lead Service Lines	14,078	11,924	2,154	-15.30%
Galvanized Requiring Replacement	2,856	2,446	410	-14.36%
Unknown Materials	75,050	63,980	11,070	-14.75%



Community Participation

- Significant outreach to every community
 - Goal to complete replacements by 2032
- 2 distributions were completed February 2026
 - Reading: \$1,500,000 (Grant/Loan)
 - Winthrop: \$980,000 (Grant/Loan)
- Several Communities are preparing applications for upcoming distribution cycles

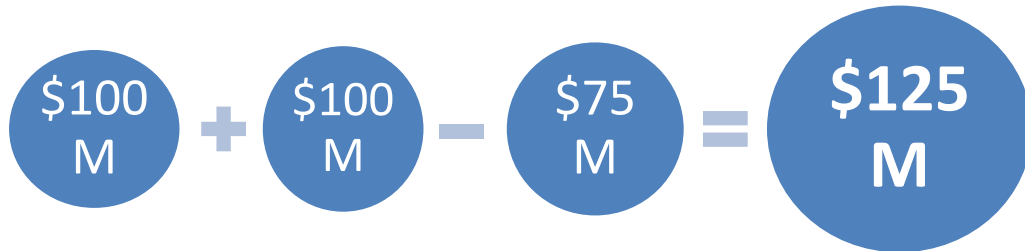




Accomplishments Under Fred's Leadership

- \$75 Million in Lead Funds Distributed
- 9,684 Lead Service Lines Replaced
- 1,715 Lead Goosenecks Removed
- 3,767 Investigations Completed

- In-person meetings with MWRA Communities





Presentation to

MWRA Board of Directors

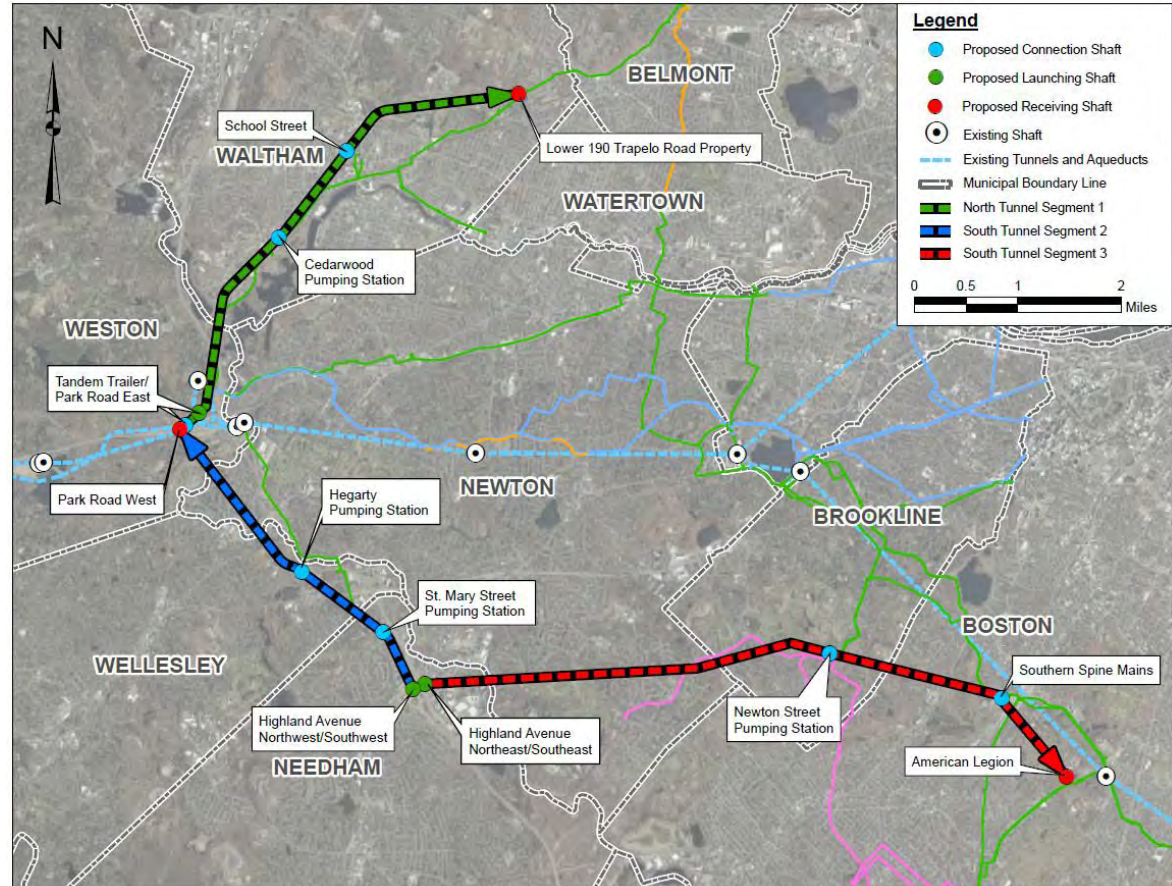
Metropolitan Water Tunnel Program Update

April 15, 2026



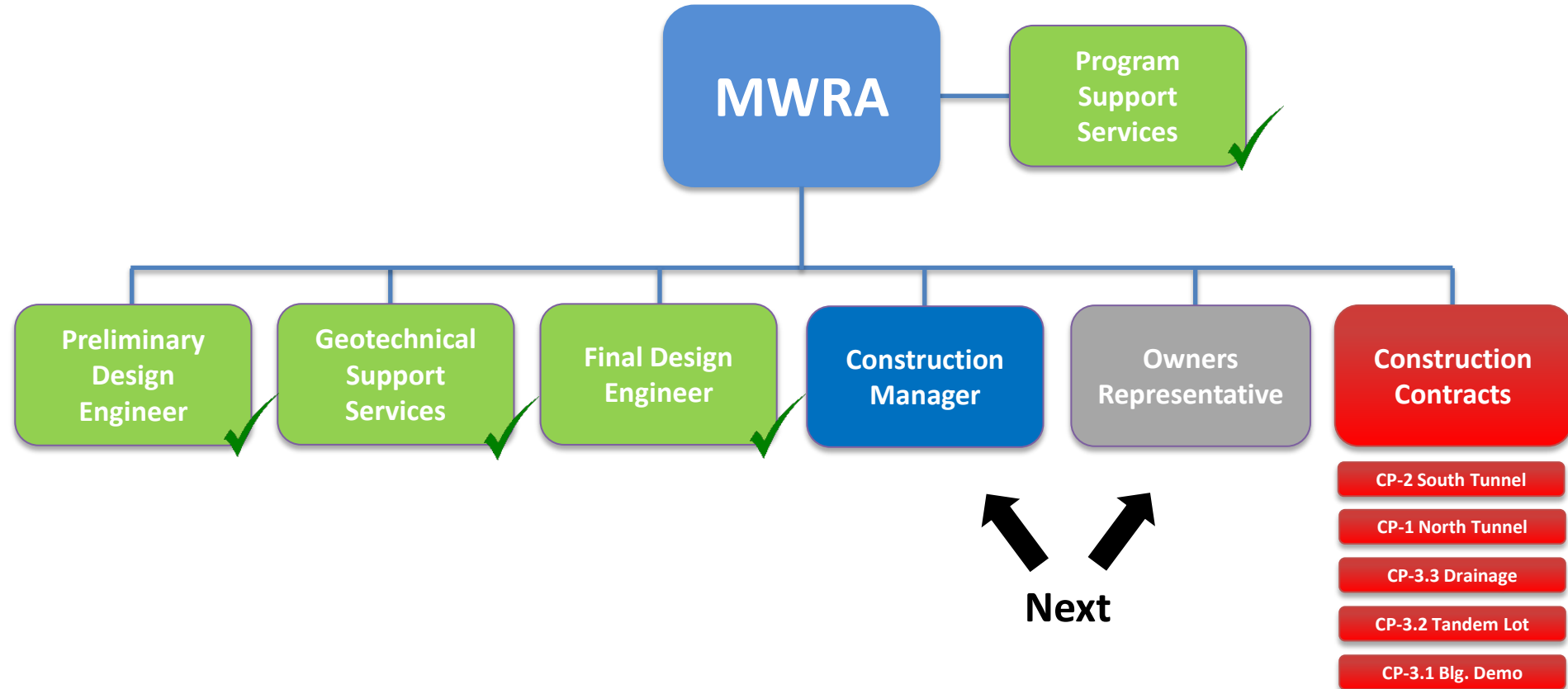
Metropolitan Water Tunnel Program

- ~15 miles of deep, hard rock, pressure tunnel
- Tunnels will begin in Weston (I-90/I-95 vicinity)
- Northern Tunnel - ~5 miles, ends in Waltham
- Southern Tunnel - ~10 miles, ends in Mattapan near American Legion Hwy
- Six intermediate connections to existing water infrastructure
- Construction is planned to occur between 2028 and 2040





Tunnel Program Organization





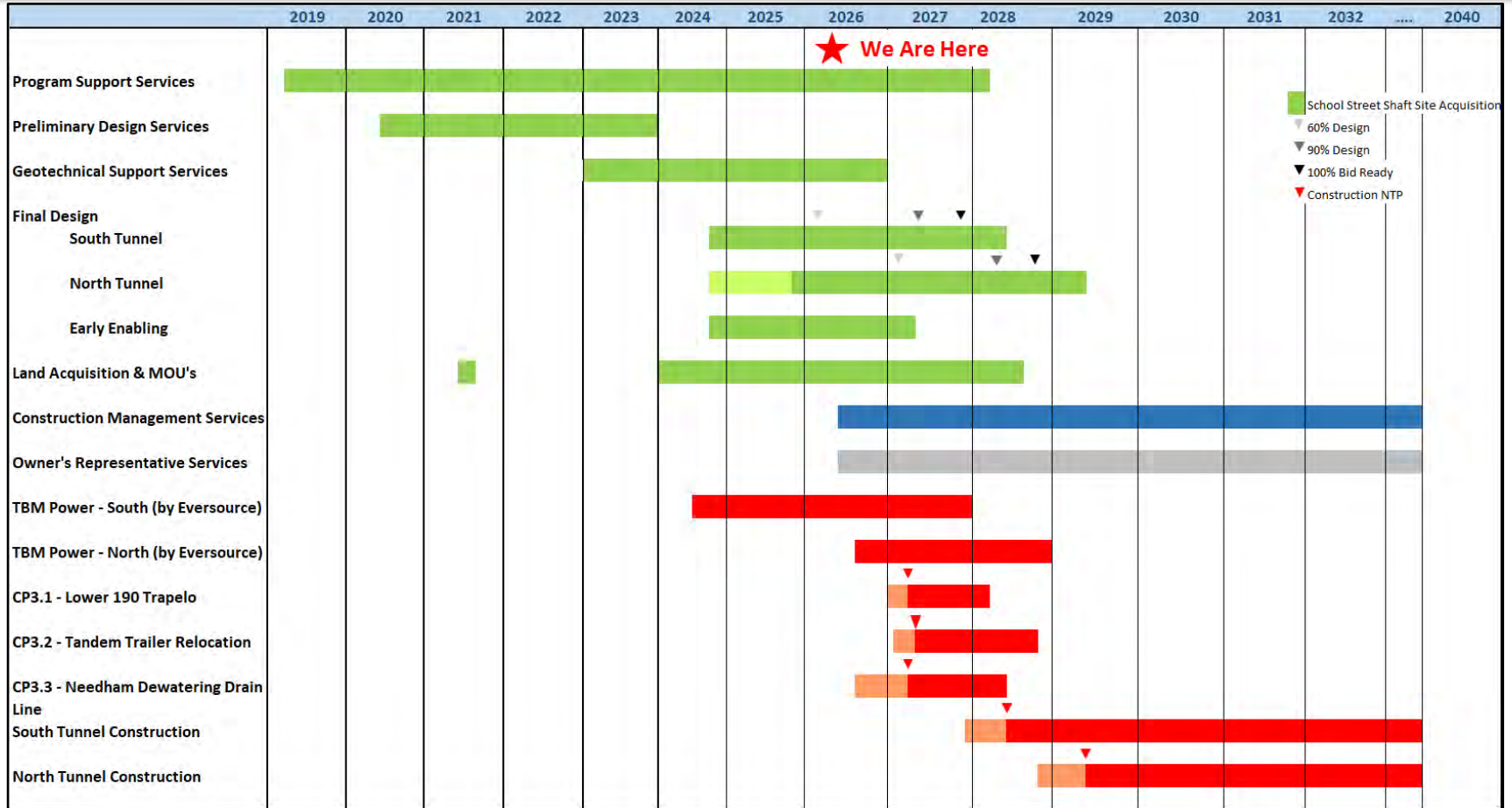
Tunnel Program – Upcoming Work

Ongoing and Upcoming Work:

- Continue Final Design Engineer Services for both tunnels – 60%, 90%, 100%, Bid Documents
- Initiate CM and OR services
- Constructability and Biddability Reviews
- Value Engineering Review
- Early Enabling construction contracts – to be completed prior to tunnel NTP
 - Needham Dewatering Drain Line
 - Tandem Trailer Lot Relocation
 - Lower 190 Trapelo Building Demo
- Land Acquisition ongoing
- Community Coordination/Emergency Rescue
- Eversource TBM Power Update
 - South Tunnel TBM Power ongoing
 - North Tunnel TBM Power upcoming BOD meeting
- South Tunnel Construction procurement planned for late 2027 with NTP in 2028
- North Tunnel one-year stagger



Tunnel Program Schedule





Presentation to

MWRA Board of Directors

Metropolitan Water Tunnel Program

***Construction Management Services
Contract 7356***

April 15, 2026



Construction Management Services (7356) Overview

- Construction Management Services
 - CM will be the "eyes and ears" for the MWRA providing oversight of the Tunnel Contractors work
 - Understands the logistics & schedule challenges for large tunnel projects
 - Understands how to interpret encountered ground conditions and how those can impact tunnel construction methods and permanent liner system performance
 - Multi-discipline construction experts that understands the challenges of connecting to a large, active water system
- CM Services will be provided in two phases
 - Pre-construction (~2 years)
 - Construction (~8 years + 1 year warranty)



Pre-Construction Support Services

- Annual project work plans and Construction Management Plan
- Constructability and Biddability reviews of 60%, 90%, and 100% designs
- Construction Cost Estimate and Schedule Reviews
- Project Management Information System
- Prepare a Labor Study
- Assistance during bidding



Construction Management Services (7356)

Scope of Work

- **Construction Phase Services**

- Resident Engineering Resident Inspection
- Testing, Disinfection, Flushing, and Commissioning oversight
- Quality Assurance monitoring and Independent Quality Assurance Testing
- Tunnel survey checks
- Pre and Post Construction survey
- Instrumentation and Environmental Monitoring and Compliance
- Safety Compliance
- Document and Project Controls
- Change Order, Claims, and Dispute Resolution Board Management
- Submittal Review and RFI Management
- Cost Estimating and Scheduling
- Labor Relations during construction



Two Step Procurement Process

- Contract will be awarded for the full duration of construction, including warranty period (11 Years)
- Received three Qualifications Statements
 - Hatch
 - Mott MacDonald
 - Parsons
- All three invited to RFP Step



Evaluation Criteria

- Request for Proposal/Scope of Work was issued with multiple evaluation criteria
 - Cost (20 points)
 - Qualifications/Key Personnel (20 points)
 - Technical Approach (20 points)
 - Capacity/Organization and Management Approach (20 points)
 - Relevant Experience/Past Performance (15 points)
 - MBE/WBE Participation (5 points)

 - Total Points 100



Scope Of Work & Request For Proposal

- Provided a detailed SOW to all proposers
 - Set clear expectations, enable transparency and long-term management
- Required each proposer to submit:
 - 11 Key Personnel to ensure a complete team
 - Full explanation of their management structure/approach
 - Full staffing structure and succession plan
 - Identification of subconsultants including MBE/WBE participation
 - Detailed technical approach
 - Detailed cost estimate for pre-construction and construction phase



Selection Committee Proposal Evaluation

- Reviewed all 3 proposals in detail
- Asked for clarifications from all 3 proposers
- Interviewed each team
- Used established evaluation criteria to score and rank the proposals in accordance with best value process

Proposer	Total Final Score	Ranking
Hatch	424	1
Parsons	415	2
Mott	396	3



Cost Proposal Summary

Proposer	Proposed Cost (Loaded Labor & Direct Costs)	Proposed Level of Effort (Hours)
Parsons	\$140,072,388	550,251
Staff Estimate	\$150,155,218	512,430
Hatch	\$153,826,032	568,215
Mott	\$154,388,436	561,468

- Professional services contract with a not to exceed amount
- Compensation will be for actual work performed in accordance with contract terms
- Work will be authorized in phases (pre-construction & construction) as well as in accordance with annual workplans



First Ranked, Hatch Team

- Demonstrated a highly qualified team with strong subconsultants that know MWRA's water system
- Demonstrated best understanding and approach to deliver the technical and non-technical CM scope of services
- Demonstrated staff capacity and succession plan for the full project duration, the best integrated resident engineering approach and structure, as well as the best management approach to deliver the services needed on time
- Identified a clear separation of responsibilities from the FDE
- Proactive project controls approach for project transparency and consistency and maintaining detailed construction records

Selection Committee recommends award of Contract 7356 to Hatch Associates Consultants, Inc.



Presentation to

MWRA Board of Directors

Metropolitan Water Tunnel Program

***Owner's Representative Services
Contract 8153***

April 15, 2026



Owner's Representative Services (8153) Requirements

- M.G.L. c. 30, §39M½, requires MWRA to engage an Owner's Representative for any "major contract. "
 - Construction of the two tunnels qualifies as a major contract (construction exceeds \$50M)
 - First MWRA project statutorily required to engage an Owner's Representative
- Owner's Representative must:
 - Be wholly independent of designer, contractor or any subconsultant
 - Solely responsible to the Commonwealth and the authority (MWRA) retaining it



Owner's Representative Services (8153) Scope of Work

- Contract is to be awarded for a term of 10 years
- Pre-Construction Services
 - Peer Review of Design (60%, 90%, Bid) – Industry Standard of Care
 - Value Engineering
 - Bid Review
- Construction Services
 - Attend Site Visits & Meetings
 - May participate in cost recovery activities
 - File Annual Reports to the Inspector General



One Step Procurement Process

- RFQ/P – Received Proposals from two firms
 - Arup US, Inc
 - Boscardin Consulting Engineering, Inc
- Proposals were evaluated based on following evaluation criteria
 - Qualifications/Key Personnel (40 points)
 - Experience/Past Performance on Similar Projects (30 points)
 - Capacity/Organization, Management and Technical Approach (30 points)
- Per M.G.L. c. 30, §39M½, the selection process must be qualifications-based and further, awarding the work on a cost-plus basis is prohibited
- Accordingly, cost was not a selection criteria



Selection Committee Proposal Evaluation

Proposer	Total Final Score	Ranking
Arup	439	1
Boscardin	365.5	2



- Negotiated Method of Compensation
 - Follow regulations 945 CMR 4.00
 - Professional services contract with a not to exceed amount \$6,000,000
 - Single Hourly Rates (Internal Audit accepted) and reimbursable other direct costs
 - Compensated for actual work performed



- Extensive experience on similar water tunnel projects
- Demonstrated experience with design, construction management, and owner's representative
- Larger firm with capacity to ensure skilled personnel are engaged over the long duration contract
- Best qualified

**Selection Committee recommends award of
Contract 8153 to Arup US, Inc**