



Ware River Diversion





Presentation to

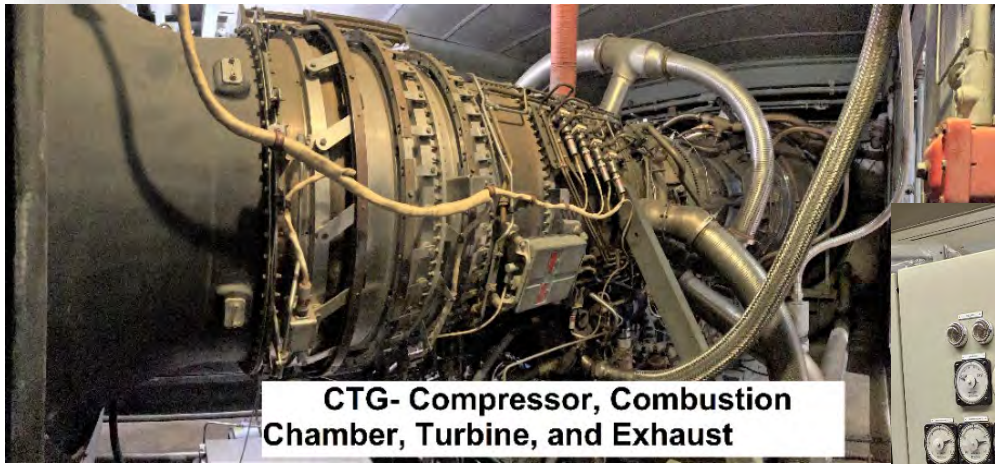
MWRA Board of Directors

*Preferred Service Agreement for
Deer Island's Combustion Turbine Generators,
Mitsubishi Power Aero LLC*

March 19, 2025



DITP Combustion Turbine Generator & Controls



CTG Control Room



Presentation to

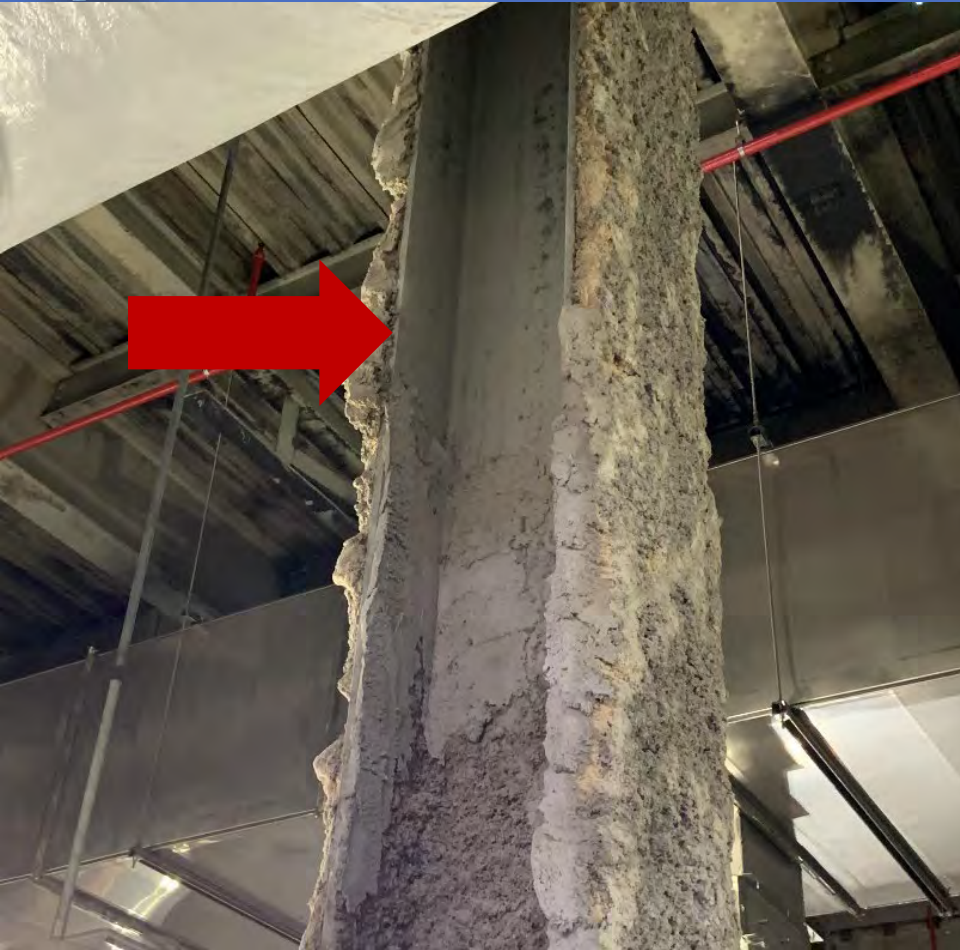
MWRA Board of Directors

*Nut Island Headworks
Odor Control and HVAC System Improvements
Contract 7548 - Change Order 20*

March 19, 2025

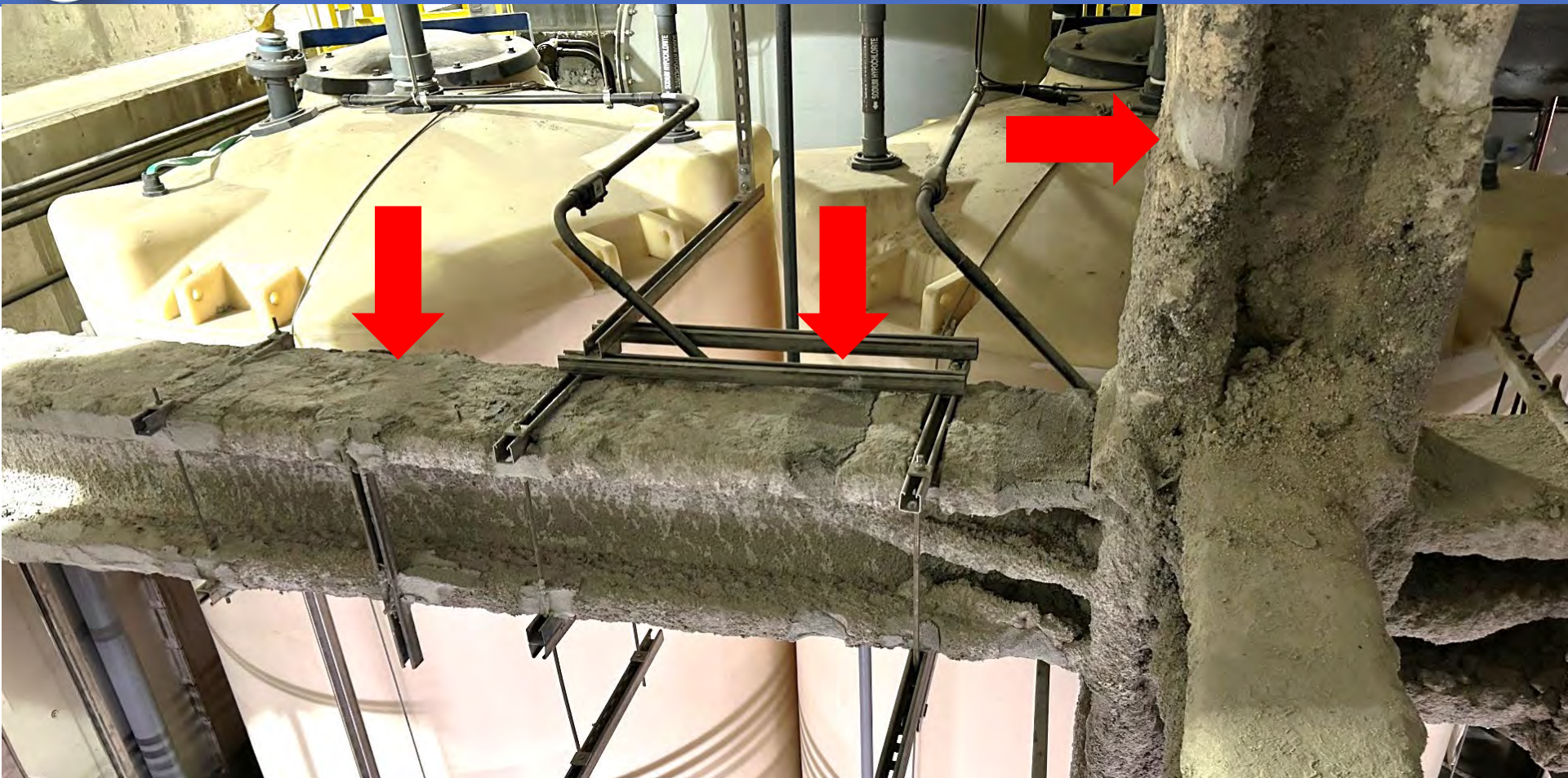


Existing Fireproofing Deficiencies





Fireproofing Repairs













Presentation to

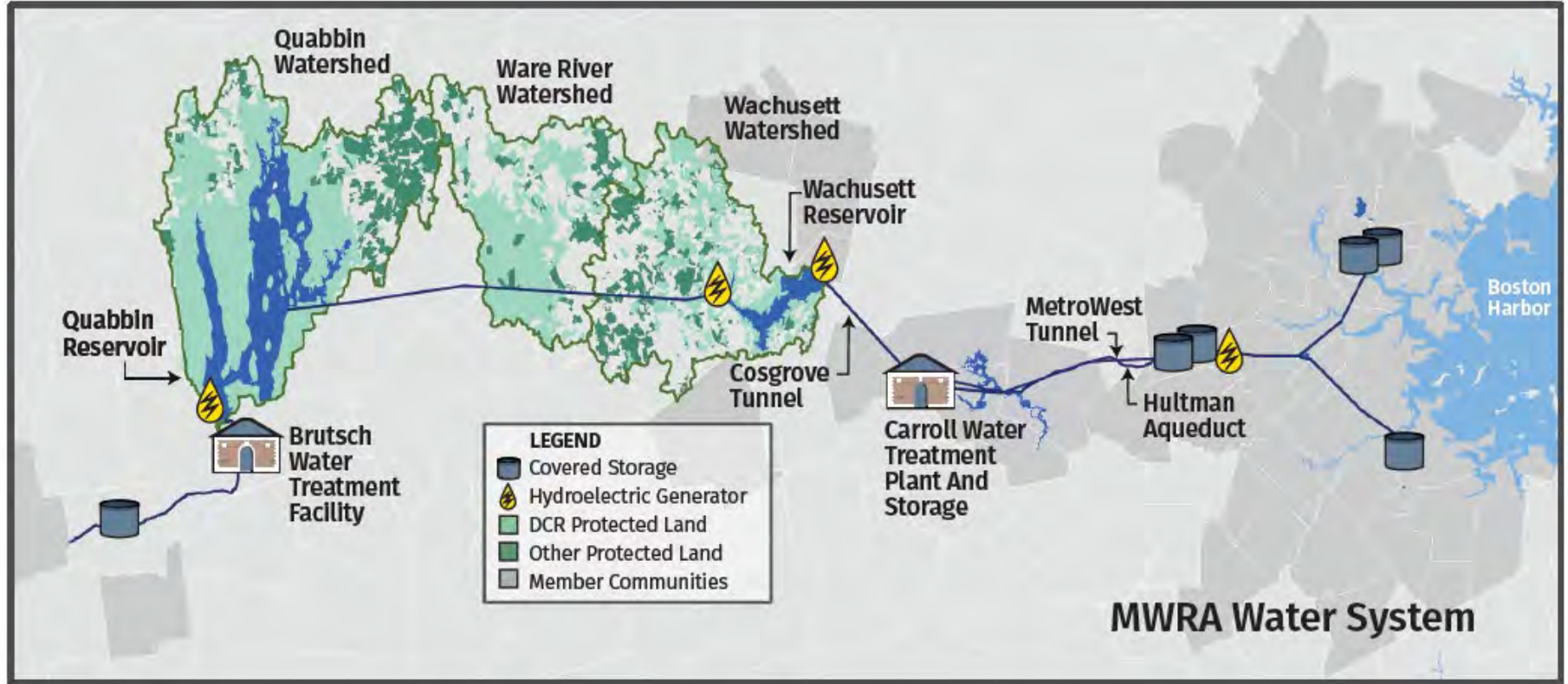
MWRA Board of Directors

*Report on 2024 Water Use Trends and
Reservoir Status*

March 19, 2025



MWRA Source– Quabbin + Ware + Wachusett



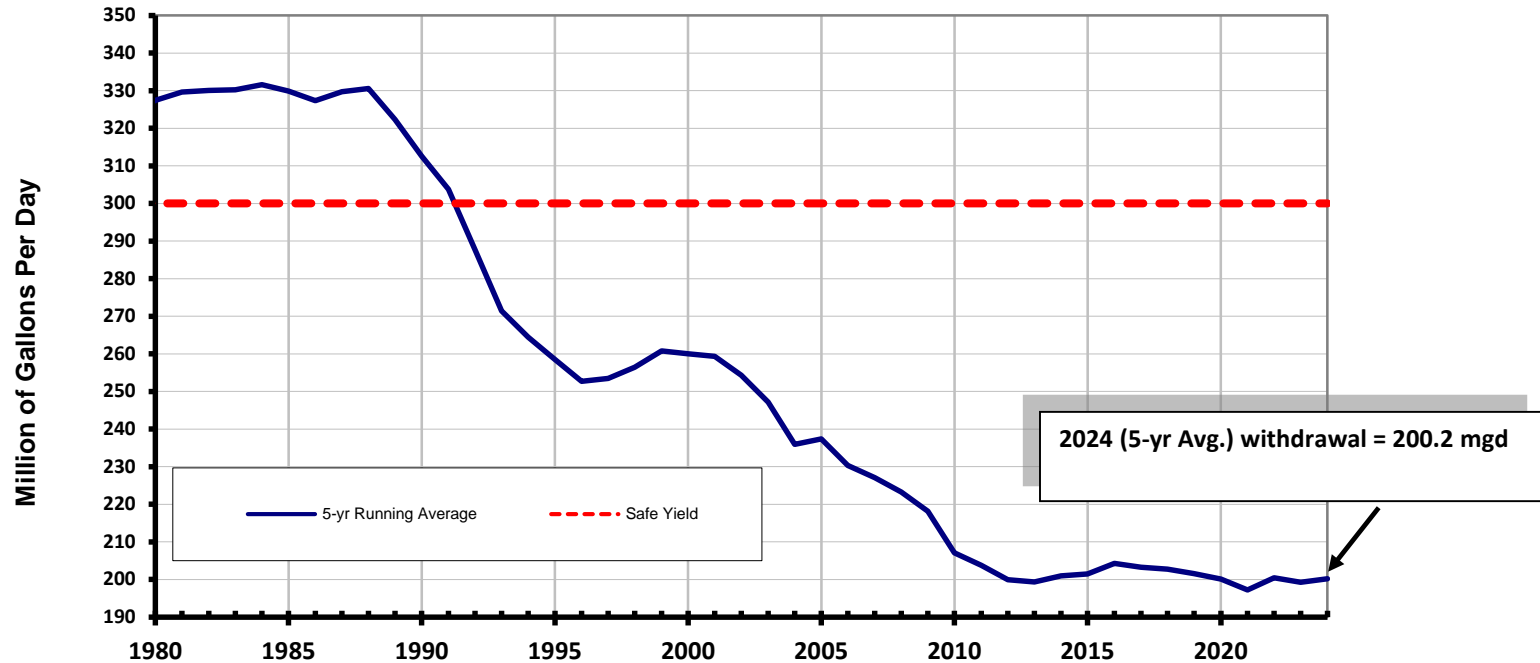


Safe Yield

- Quantity of water that can be reliably supplied over a period that includes a critical drought
- For MWRA -- the multi-year drought of the 1960's
- The combined safe yield of all three sources = 300 mgd

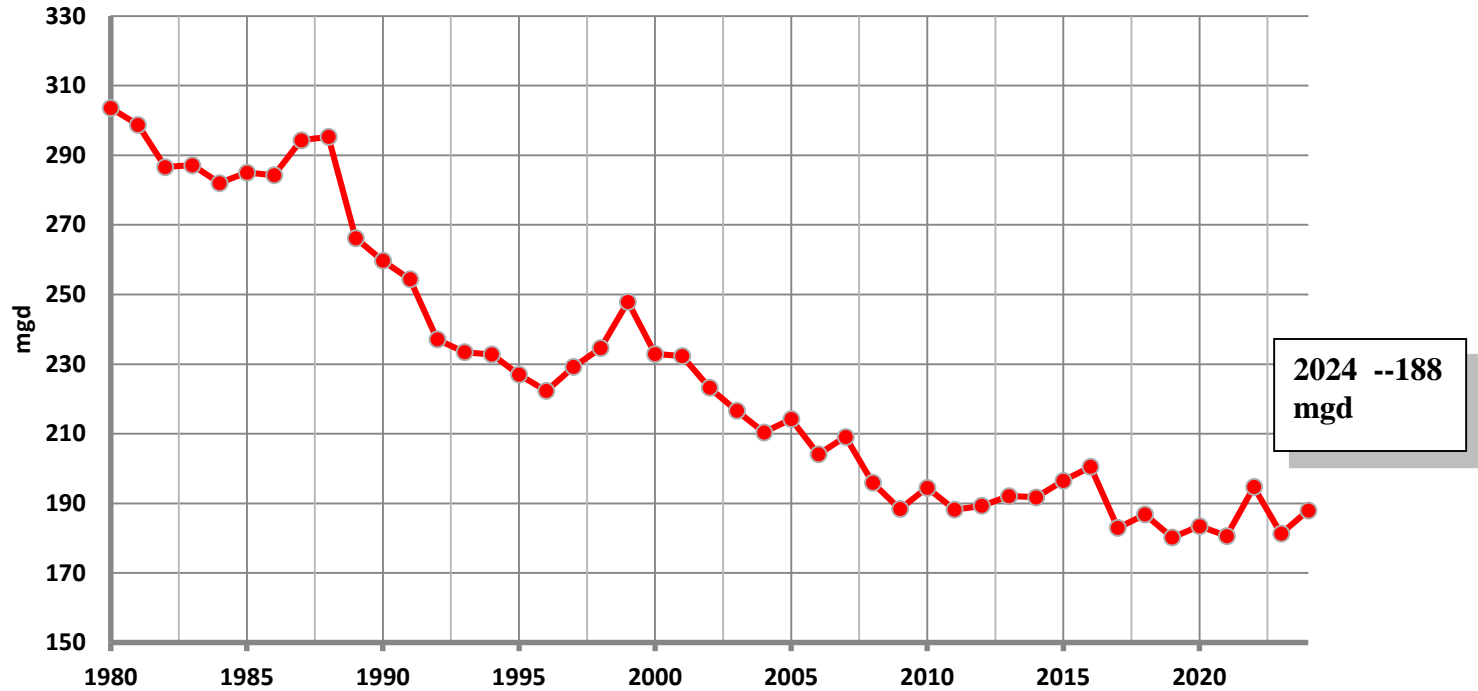


Reservoir Withdrawals Dropped Substantially Since 1980's



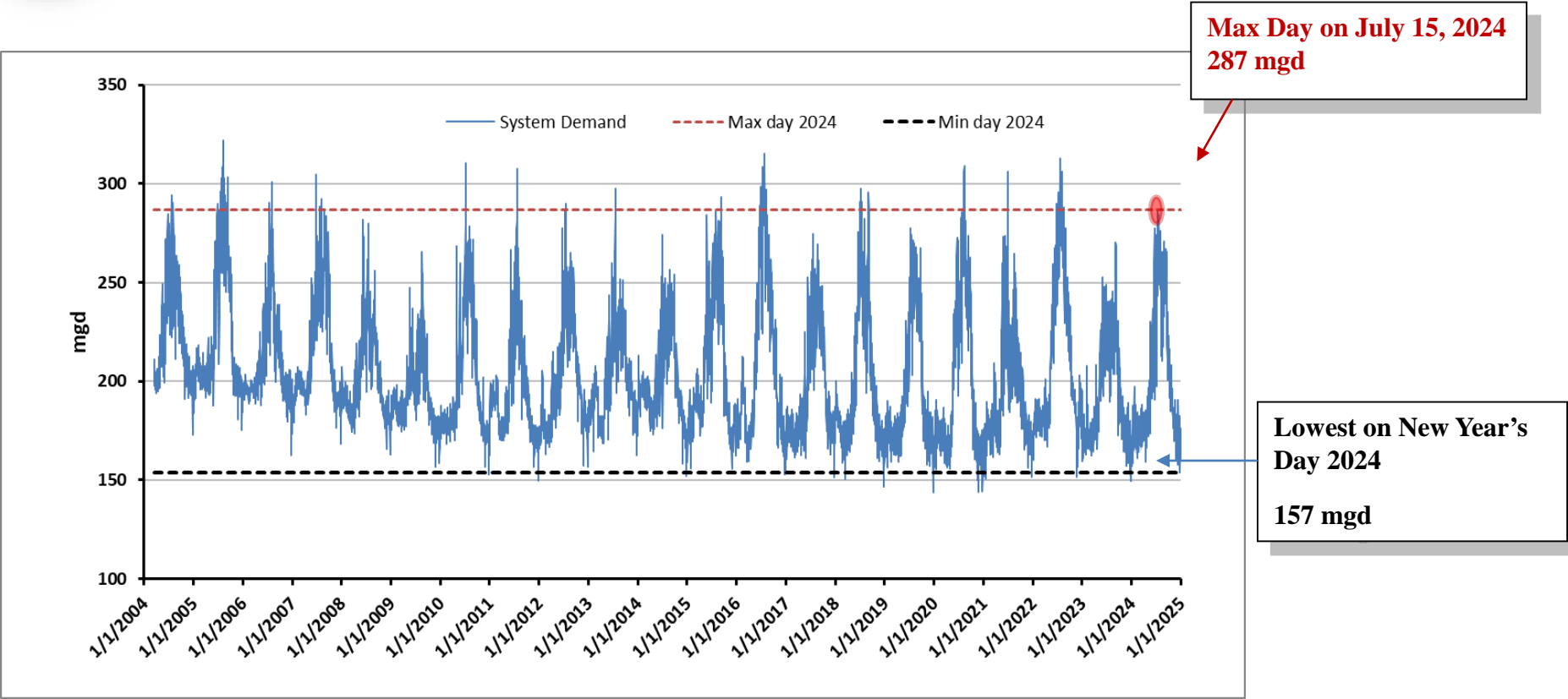


Total Consumption by MWRA Communities (1980 to 2024)





Daily System Demand



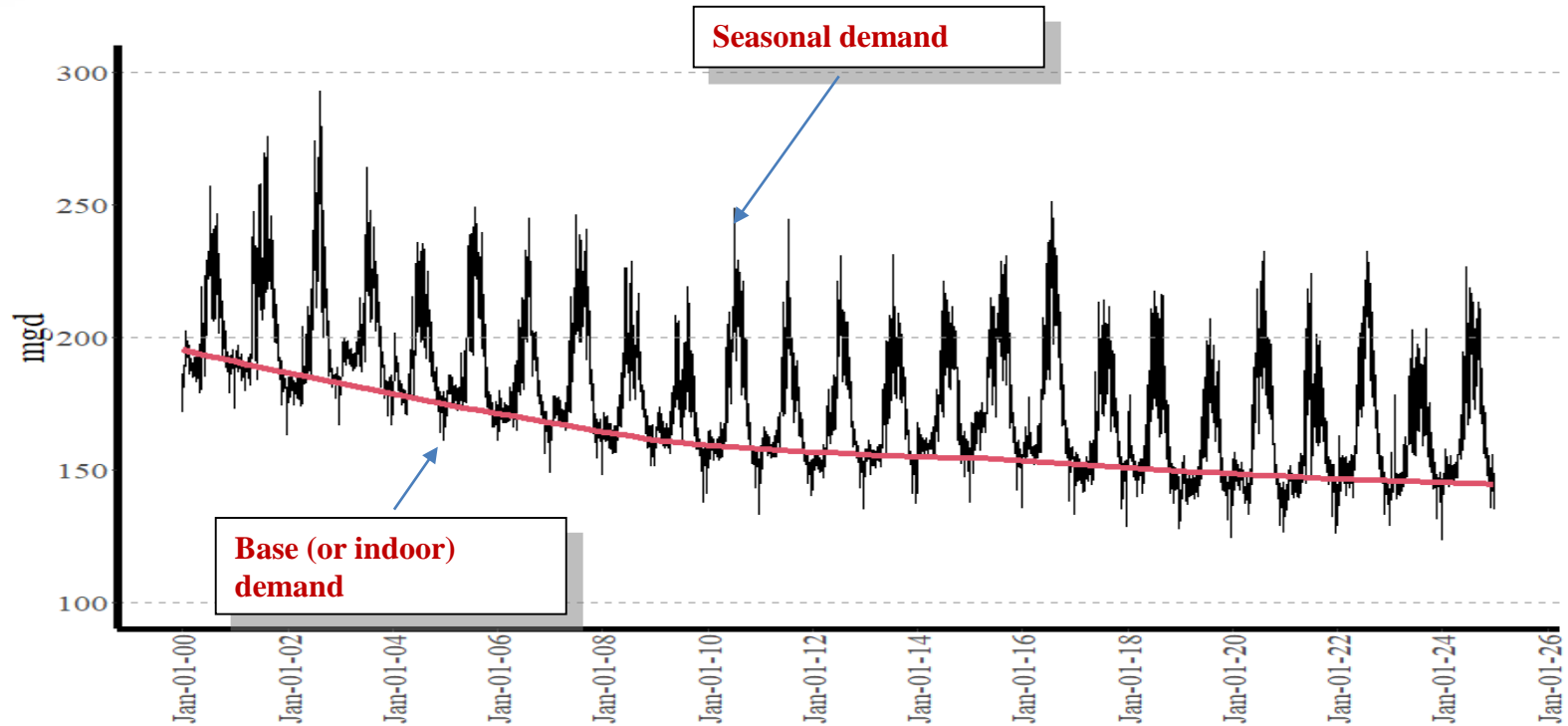


Boston Water Use (1900 to 2024)





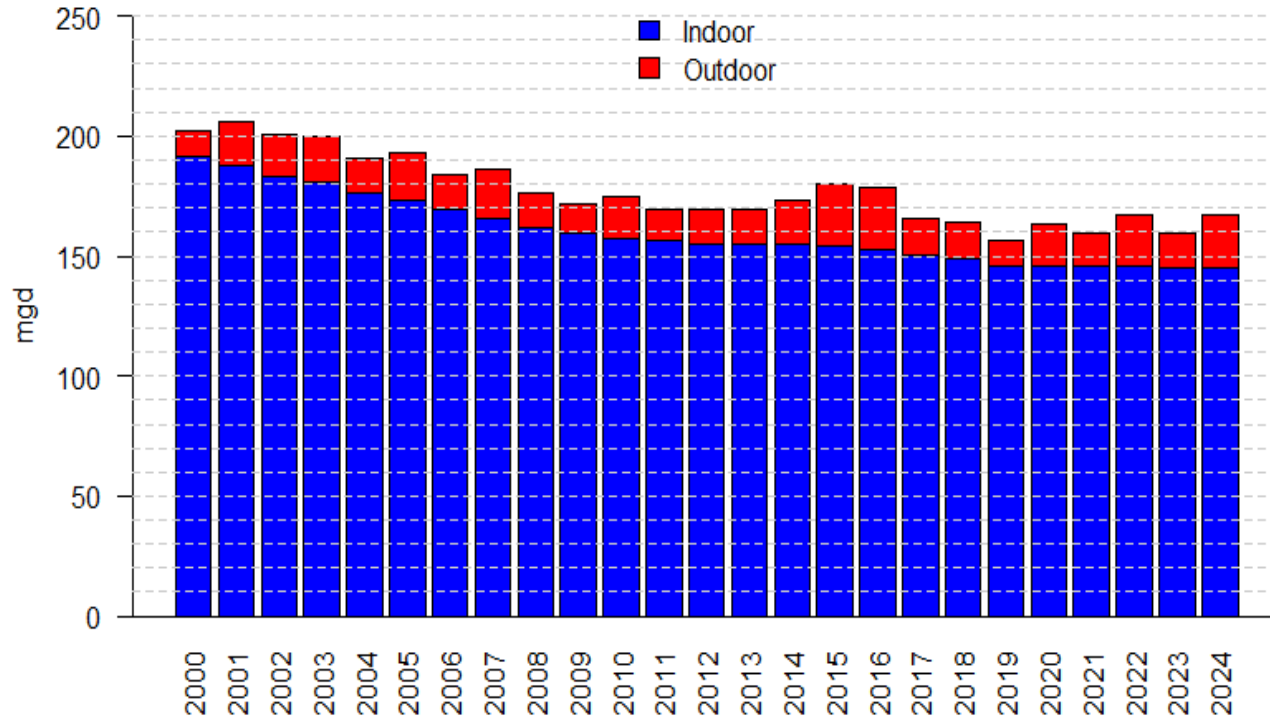
Base (Indoor) Demand vs. Seasonal Demand



Based on daily demand from fully supplied communities (2000 to 2024)

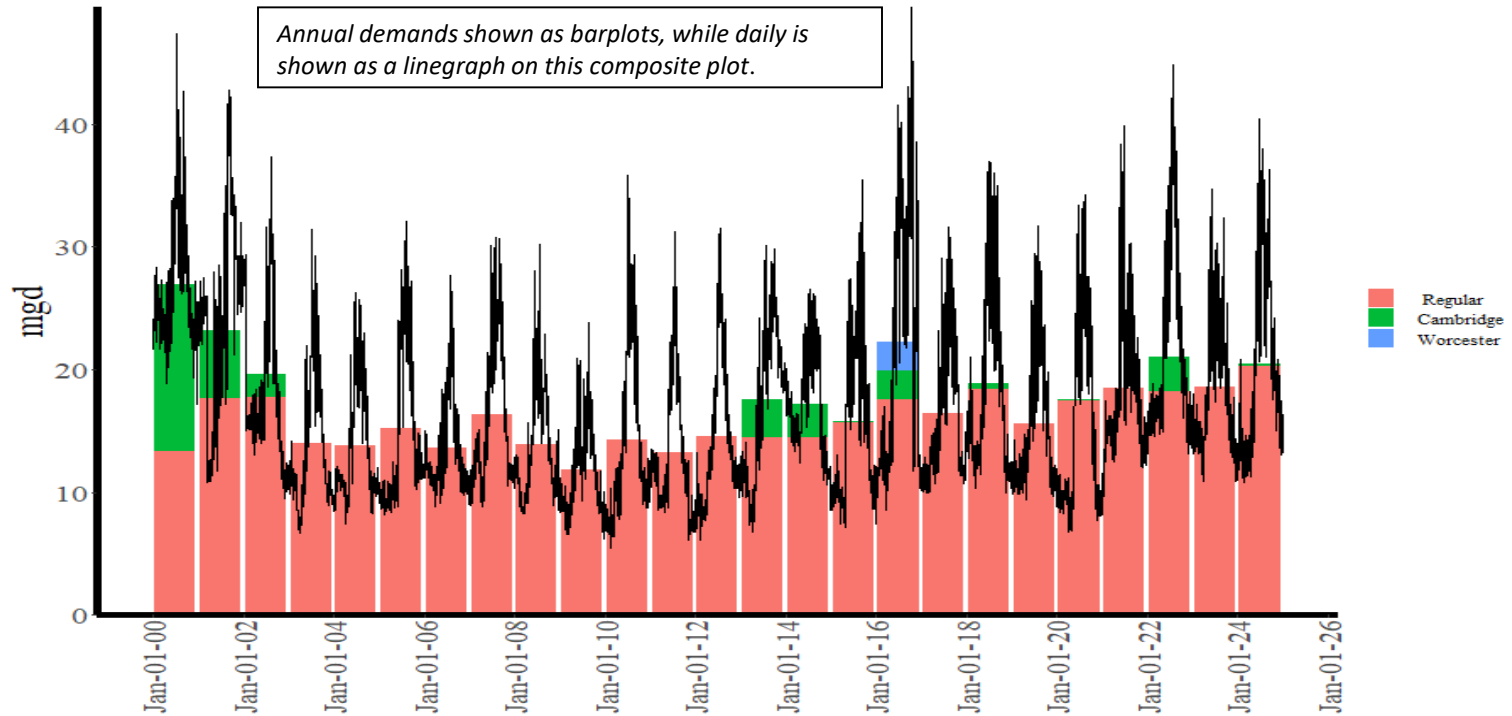


Fully Supplied Communities (Annual Base and Outdoor Use)



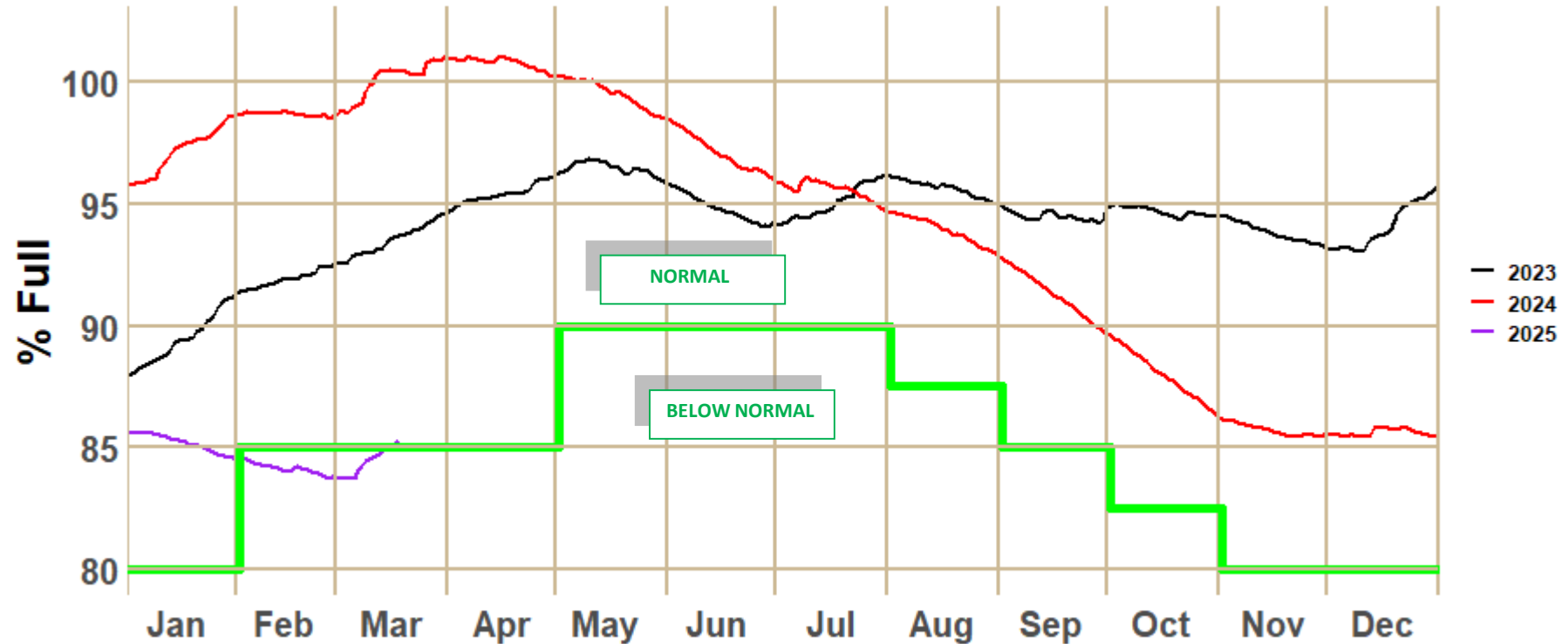


Partially Supplied Communities Have More Variable MWRA Demand





Quabbin stayed within Normal Operating Range during 2024





Presentation to

MWRA Board of Directors

***Steel Water Storage Tank Painting & Improvements
Walnut Hill Contract 7493***

March 19, 2025



Project Location





Major Project Components

- Interior and Exterior Abrasive Blast Cleaning and Painting
- Structural Improvements
 - Steel plate, pit, and seam repairs
 - Steel beam replacement
 - Internal tie rod replacement
 - External stairs, platform and guardrail repairs
- NSF61-Certified Impressed Current Cathodic Protection System



Corroded Guardrail, Stairs & Platform



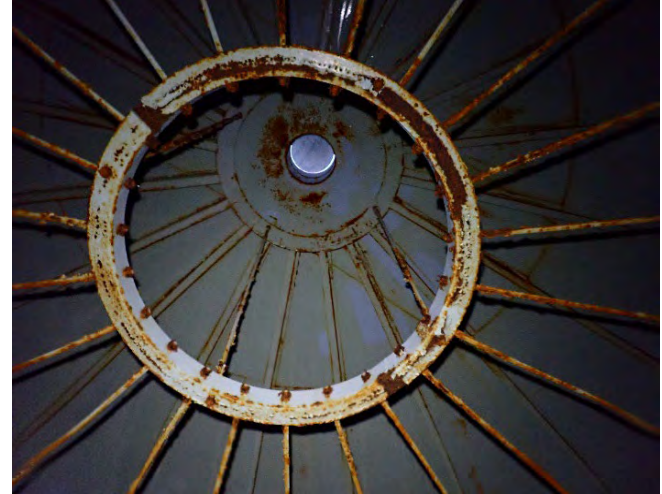
Existing Conditions



Corroded Exterior Platform



Pitting of Interior Tank Coating



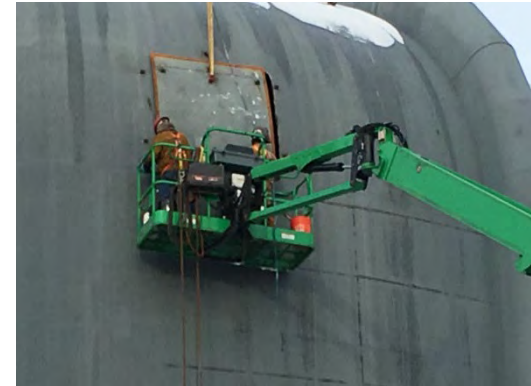
Internal Tie Rods



Steel Plate Repairs – Bellevue Tank



Steel Plate Rigging



Steel Plate Welding



Bid Results

Contractor	Bid Amount
Dynamic Sandblasting and Painting	\$5,802,700*
Atlas Painting and Sheeting Corp.	\$8,749,000
Utility Service Co., Inc.	\$9,951,400
<i>Engineer's Estimate</i>	<i>\$10,590,000</i>
Minoan Industrial Services	\$12,463,200
J&J Contractors, Inc.	\$20,907,000

* Bid was rejected