



Presentation to

MWRA Board of Directors

***Chelsea Creek Headworks Upgrade
BHD/BEC, JV 2015
Contract 7161 - Change Order 3***

July 19, 2017



Chelsea Creek Headworks: PCB/Lead Paint Abatement



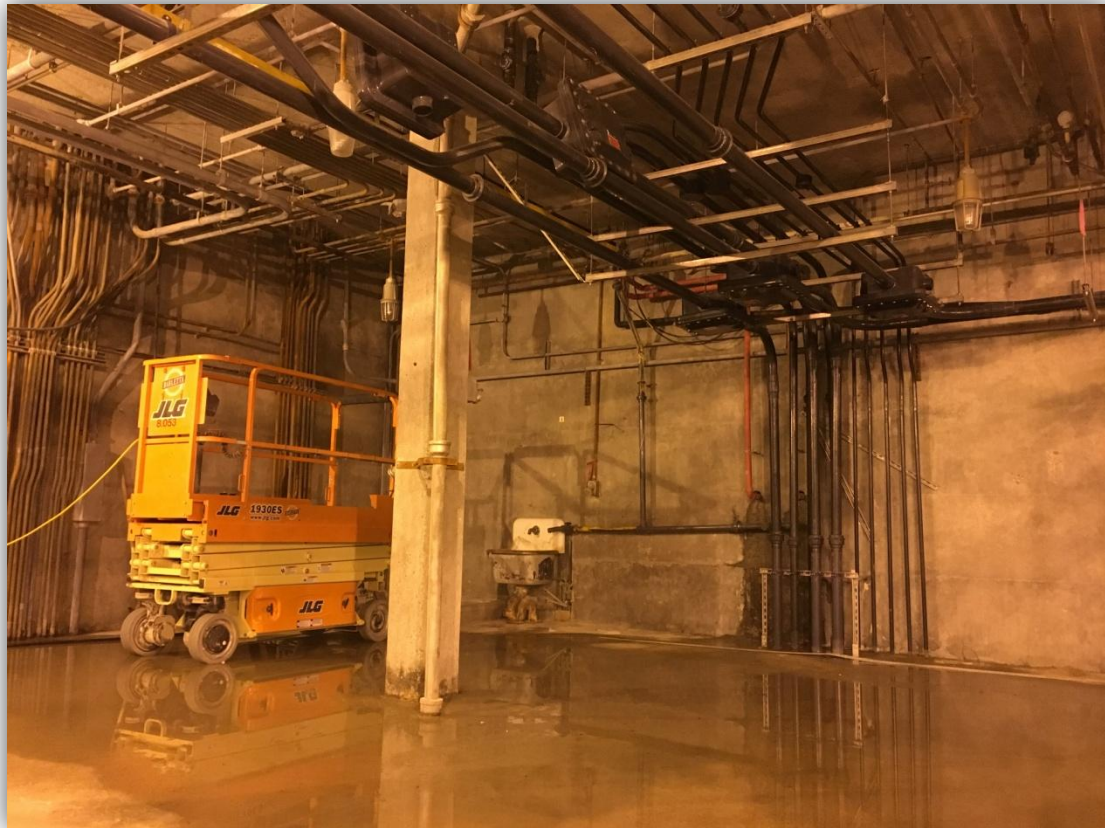


Chelsea Creek Headworks: PCB/Lead Paint Abatement



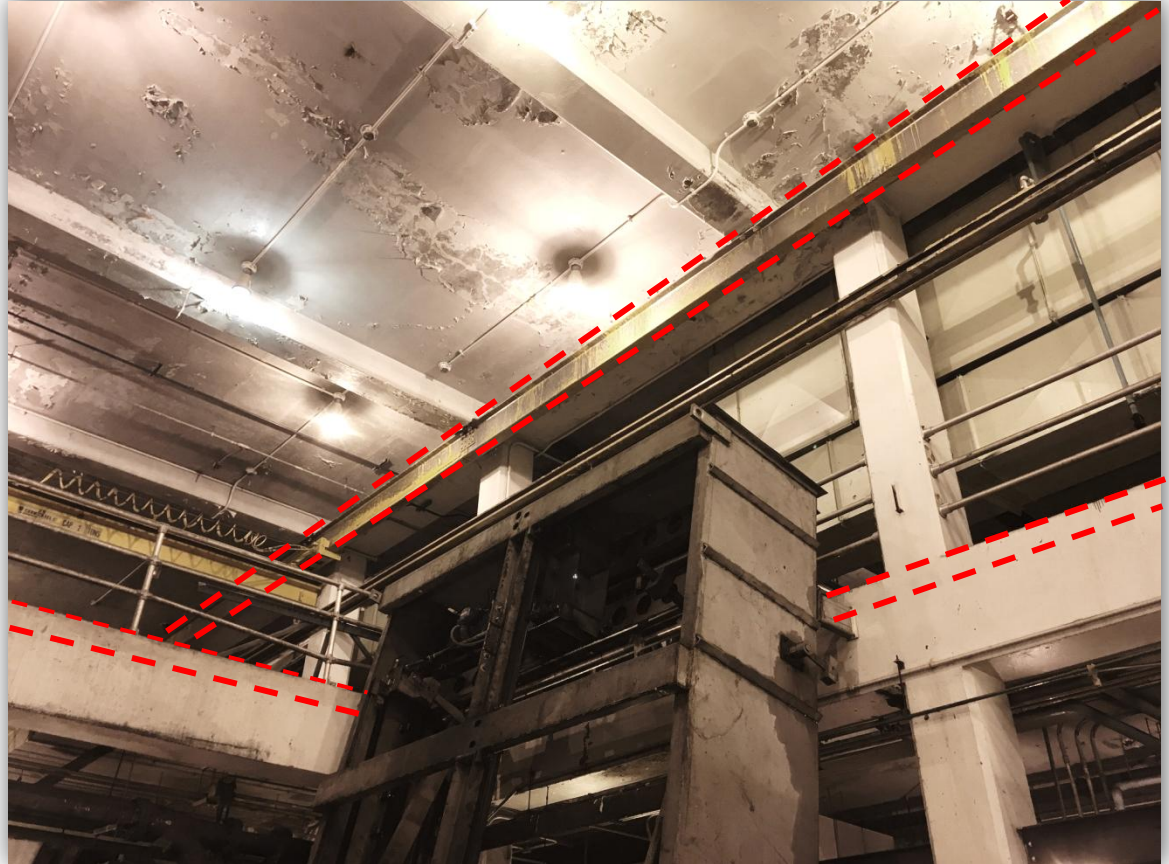
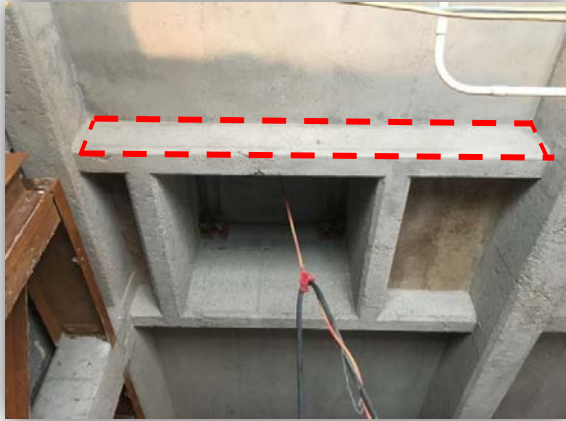


Chelsea Creek Headworks: PCB/Lead Paint Abatement



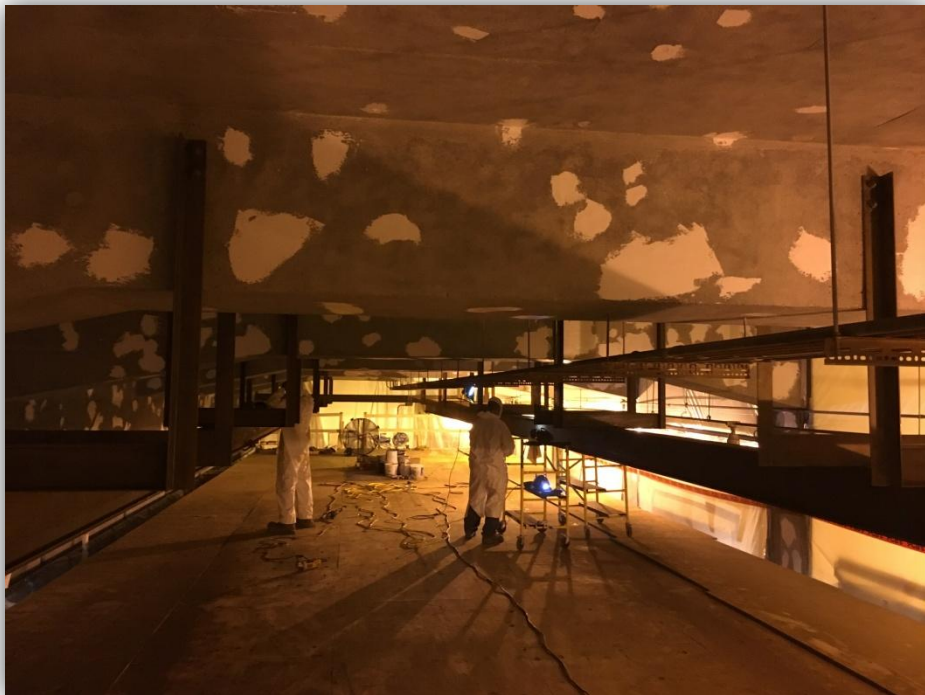


Chelsea Creek Headworks: Abatement Quantities





Chelsea Headworks Upgrade: PCB Encapsulation





Chelsea Creek Headworks: PCB Encapsulation





Chelsea Headworks Upgrade: Stair Tower C





Chelsea Creek Headworks: HVAC Replacement





***SEH Redundancy Pipeline Section 111
Boston, Contract 6454
P. Gioioso & Sons, Inc.
Change Order 1***

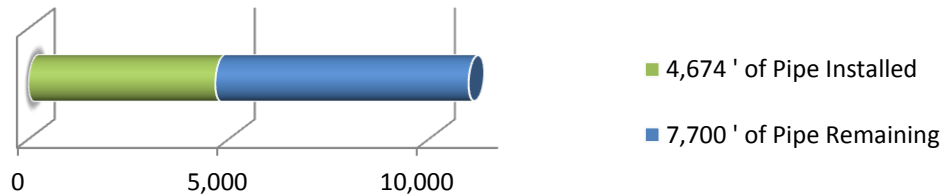
July 19, 2017



Contract 6454, Section 111 (Boston)

Bid Amount: \$11,770,000.00
Notice to Proceed: July 26, 2016
Completion: September 10, 2018

Contract 6454 Progress

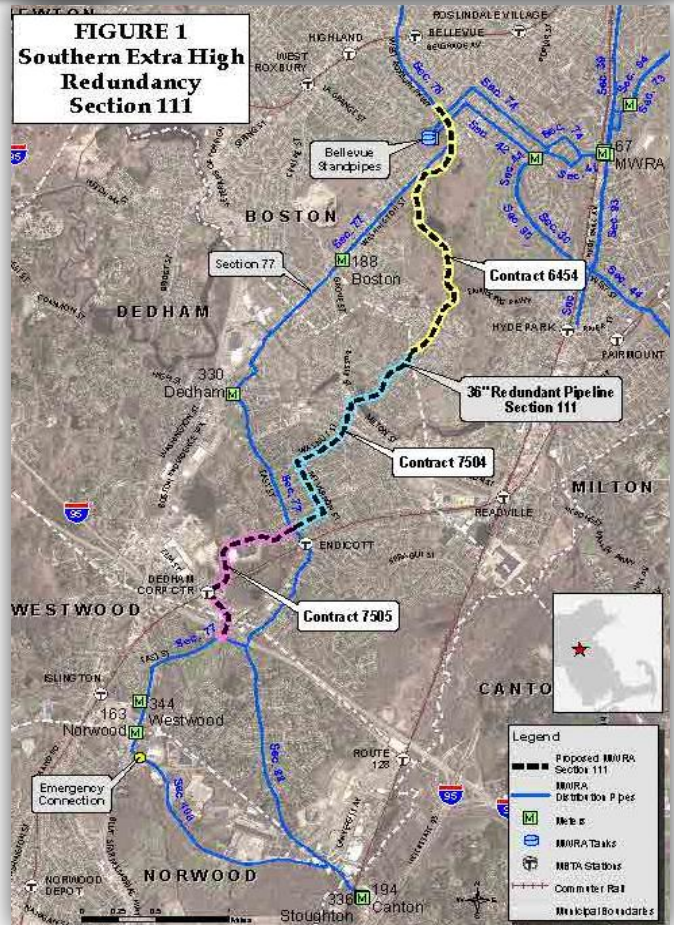


Total for Contract: 11,000 feet of 36-inch Pipe



Project Summary

FIGURE 1
Southern Extra High
Redundancy
Section 111



CONTRACT 6454 (Boston)
\$11,770,000
11,000 linear feet of 36-inch pipeline
NTP: June 2016
Substantial Completion: September 2018

CONTRACT 7504 (Dedham North)
\$17,226,350
10,000 linear feet of 36-inch pipeline
NTP: August 2017
Substantial Completion: November 2019

CONTRACT 7505 (Dedham South)
\$10,000,000
6,800 linear feet of 36-inch pipeline
NTP: December 2017
Substantial Completion: July 2020



22 1/2 Degree Bends on West Roxbury Parkway near Washington Street





West Roxbury Parkway at Washington Street



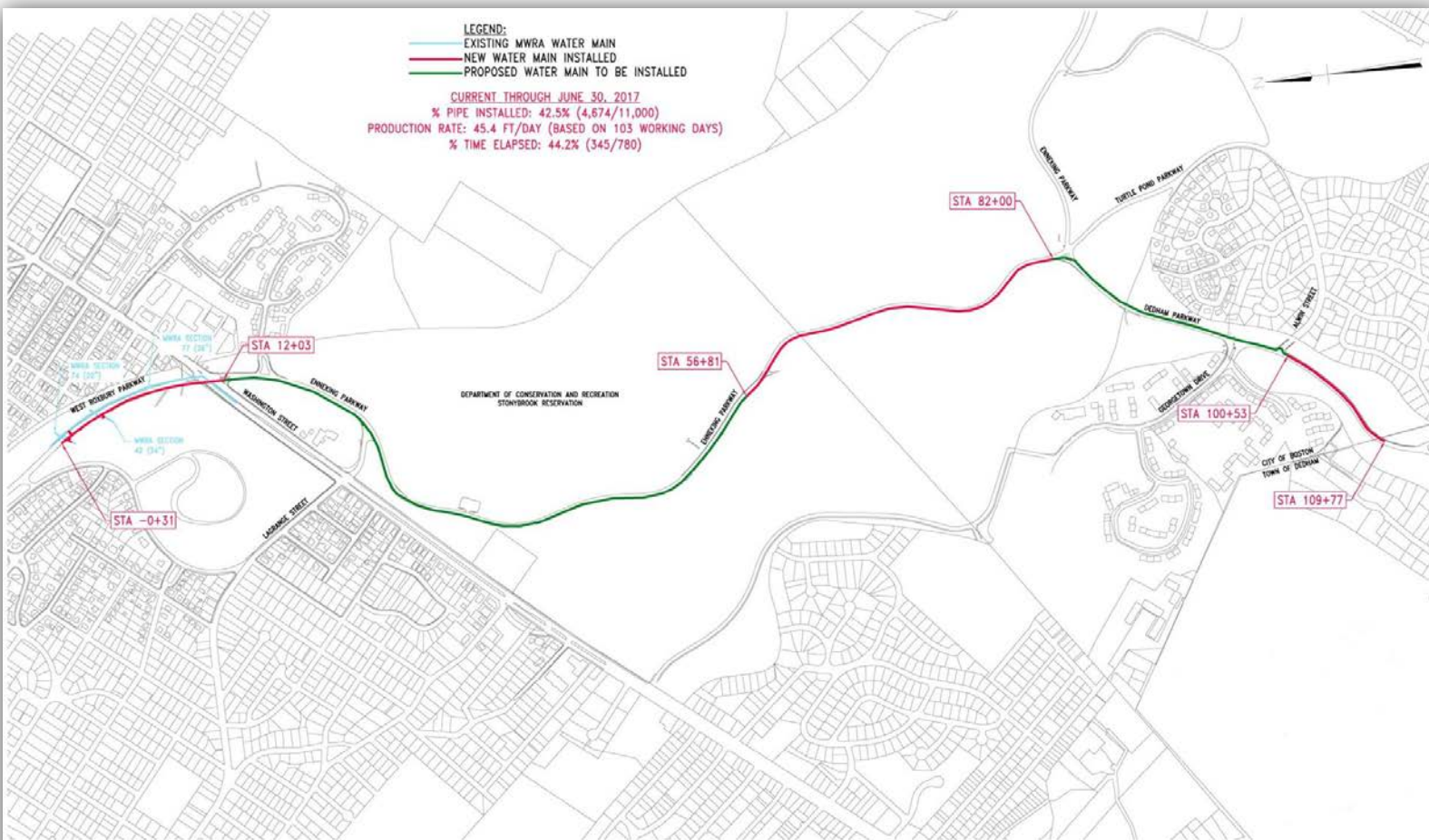


Preparing for Blasting for Ledge Removal on Enneking Parkway



- LEGEND:
- EXISTING MWRA WATER MAIN
 - NEW WATER MAIN INSTALLED
 - PROPOSED WATER MAIN TO BE INSTALLED

CURRENT THROUGH JUNE 30, 2017
 % PIPE INSTALLED: 42.5% (4,674/11,000)
 PRODUCTION RATE: 45.4 FT/DAY (BASED ON 103 WORKING DAYS)
 % TIME ELAPSED: 44.2% (345/780)



WATER MAIN PROGRESS PLAN
 SCALE: NTS

NO.	DATE	BY	CHK'D	REVISION

CONTRACT NO. :	6454	CAD FILE NO. :	
ACCESSION NO. :		SECTION NO. :	111
DATE :	JULY 5, 2017	DESIGNED BY :	N/A
		DRAWN BY :	MS
		CHECKED BY :	MS
SCALE :	NOT TO SCALE	APPROVED BY :	N/A



MASSACHUSETTS WATER RESOURCES AUTHORITY

PREPARED BY :



SOUTHERN EXTRA HIGH PIPELINE
 SECTION 111 (BOSTON)
 MWRA CONTRACT NO. 6454

DRAWING NO.

MONTHLY PIPE INSTALLATION PROGRESS PLAN
 JUNE, 2017



Contract 6454, Change Order 1

- Design borings indicated rock at 4-foot depth
- Construction showed rock sloping up toward sidewalk
- Existing BWSC 12-inch cast iron water line under sidewalk
- Old BWSC water line found directly on ledge
- New MWRA line installation using blasting
- Structural liner needed for BWSC line



***Wachusett Aqueduct Pumping Station
BHD/BEC JV 15, A Joint Venture
Contract 7157, Change Order 18***

July 19, 2017



Construction Update - Front Entrance Modifications





Construction Update - Front Entrance





Construction Update - Pump Station





Construction Update - Pump Station





Construction Update - Pump Station





Construction Update - Pump Station





Construction Update - Pump Station





Construction Update - Pump Station





Construction Update – First Floor Slab





Construction Update – Steel Erection





Construction Update – Masonry Walls





Construction Update - Pump Installation



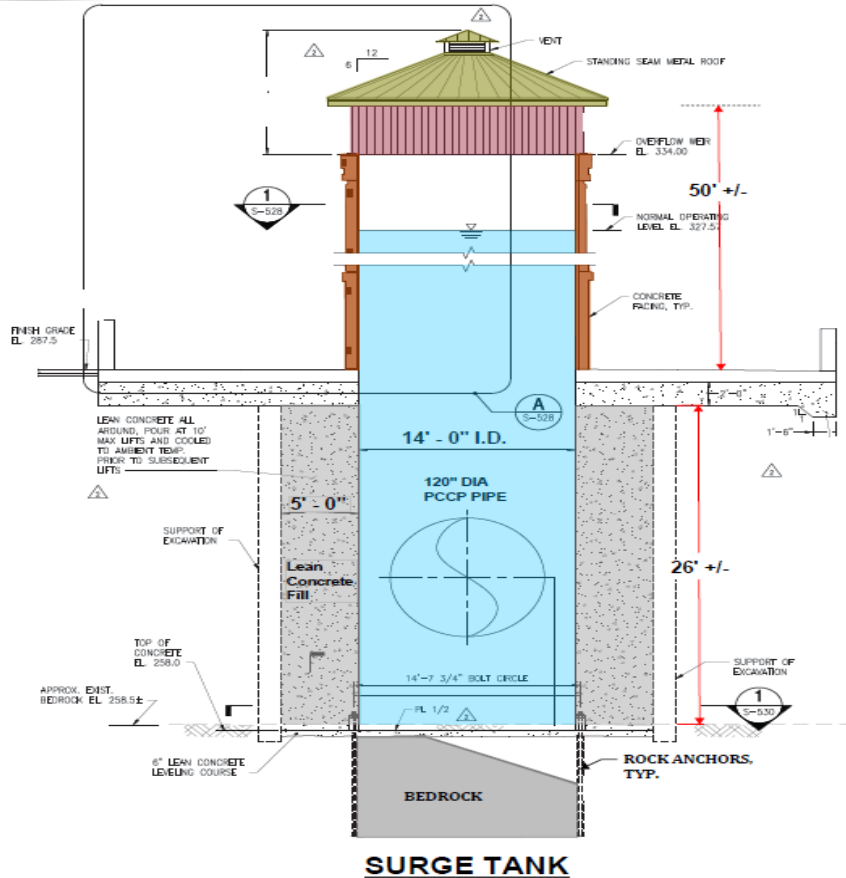


Change Order 18 – Surge Tank Foundation





Change Order 18 – Surge Tank Foundation





Change Order 18 – Micropile Layout and Drilling





Change Order 18 – Micropile Steel Bar Insert





Change Order 18 – Micropile Installation





Wachusett Aqueduct Pumping Station

